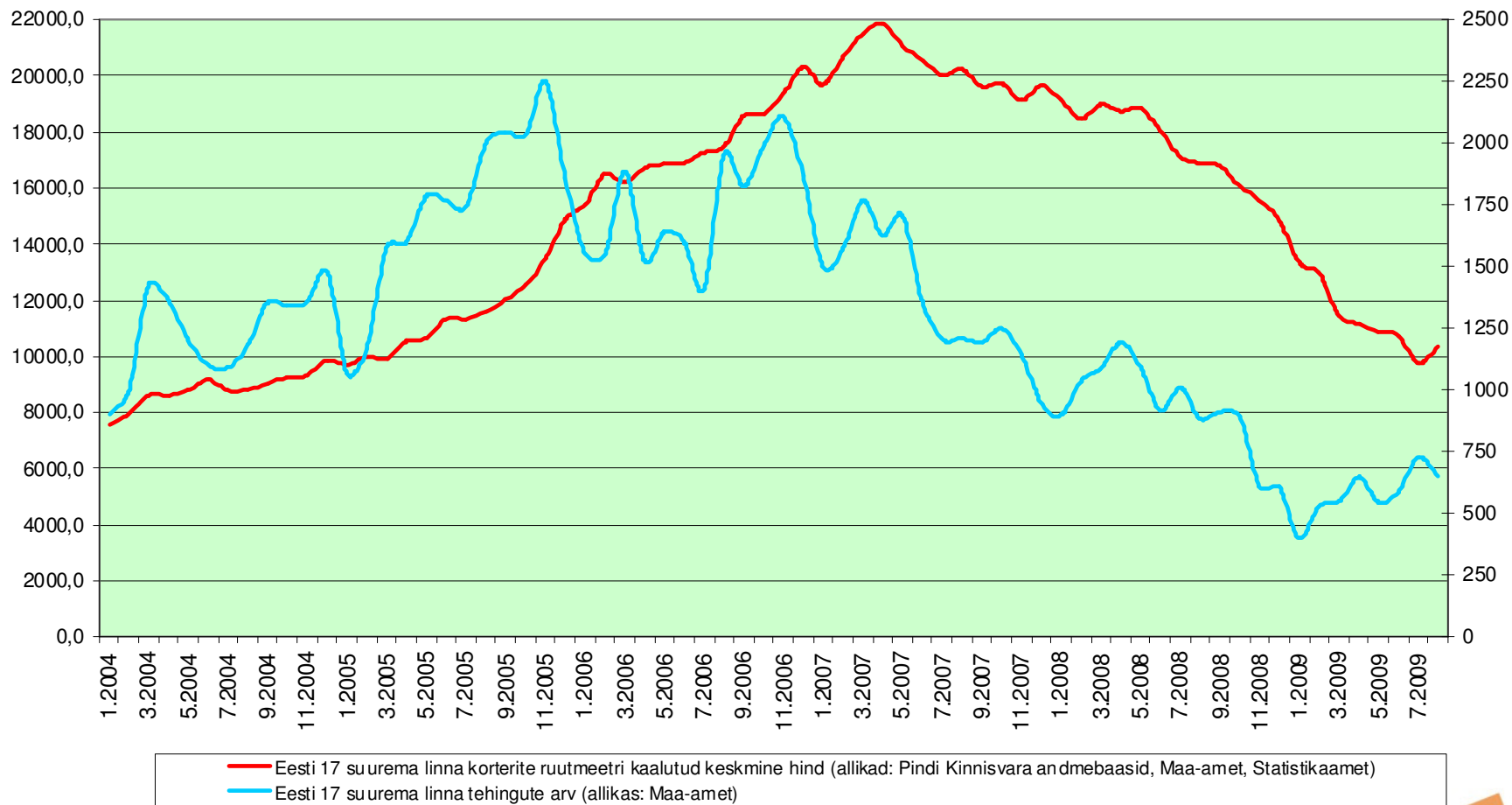


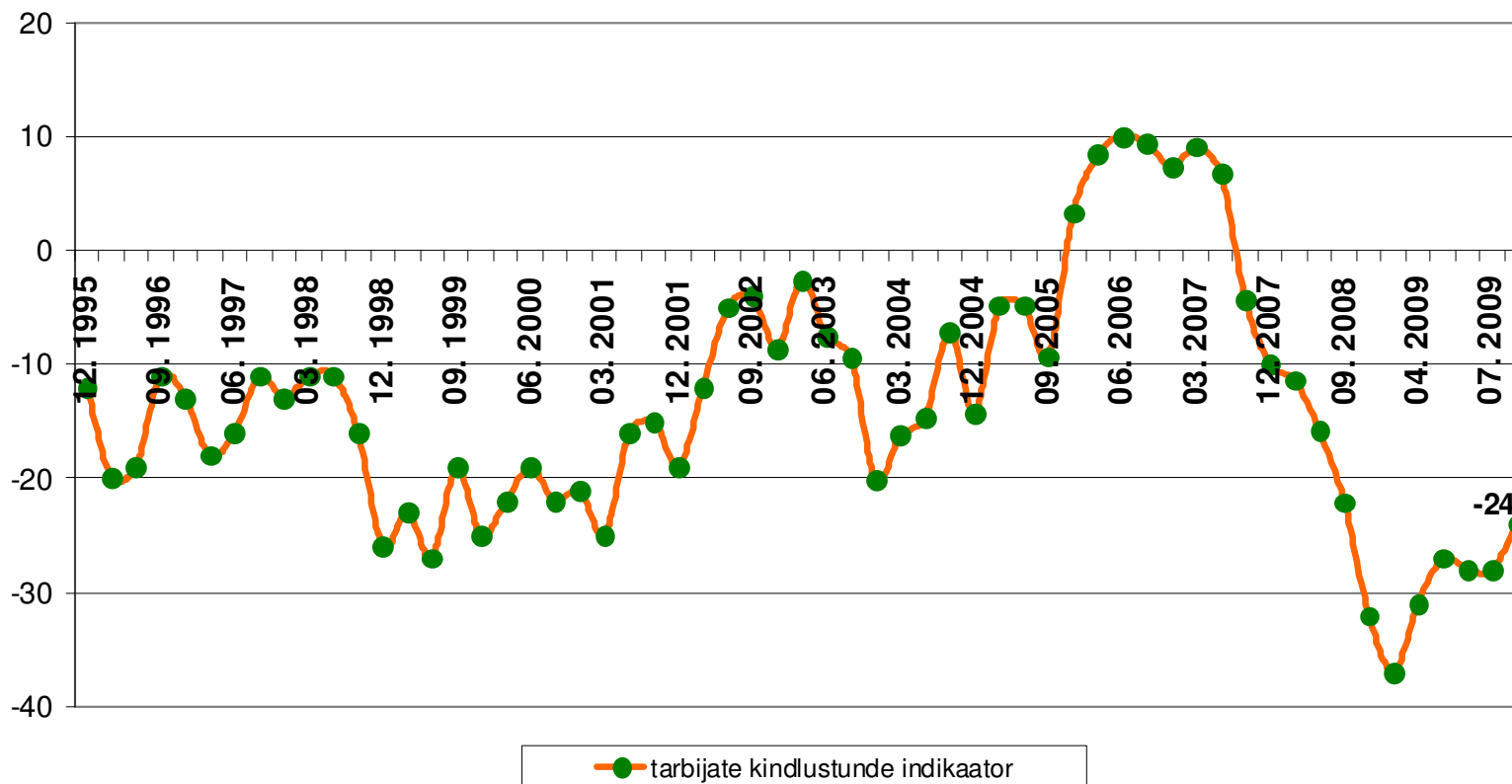


KINNISVARATURU AKTIIVSUS JA REGIONAALSED ERIPÄRAD

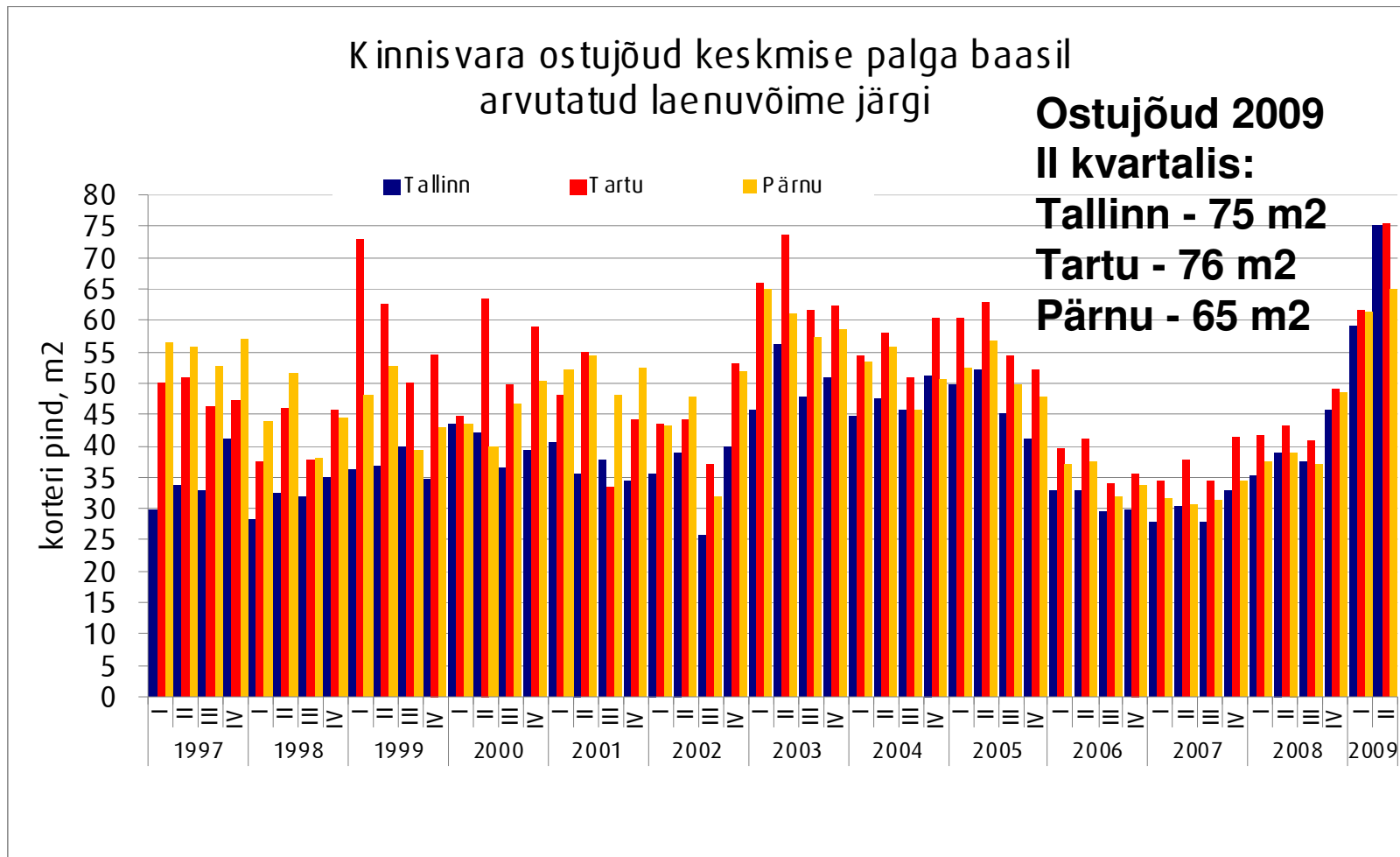
PINDI HINNAINDEKS



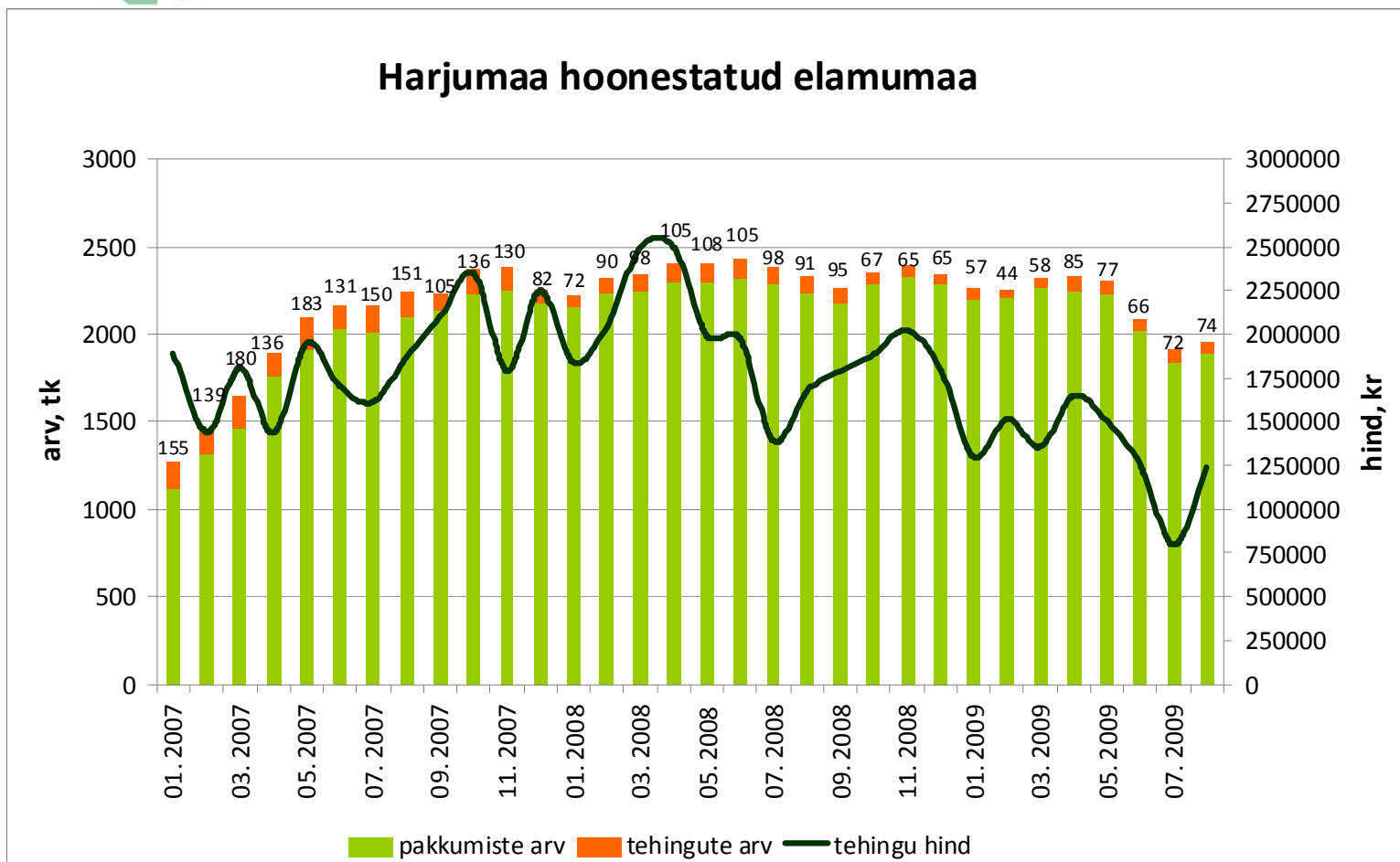
Tarbijate kindlustunde indikaator



Kinnisvara ostujõud keskmise palga baasil arvatatud laenuvõime järgi:

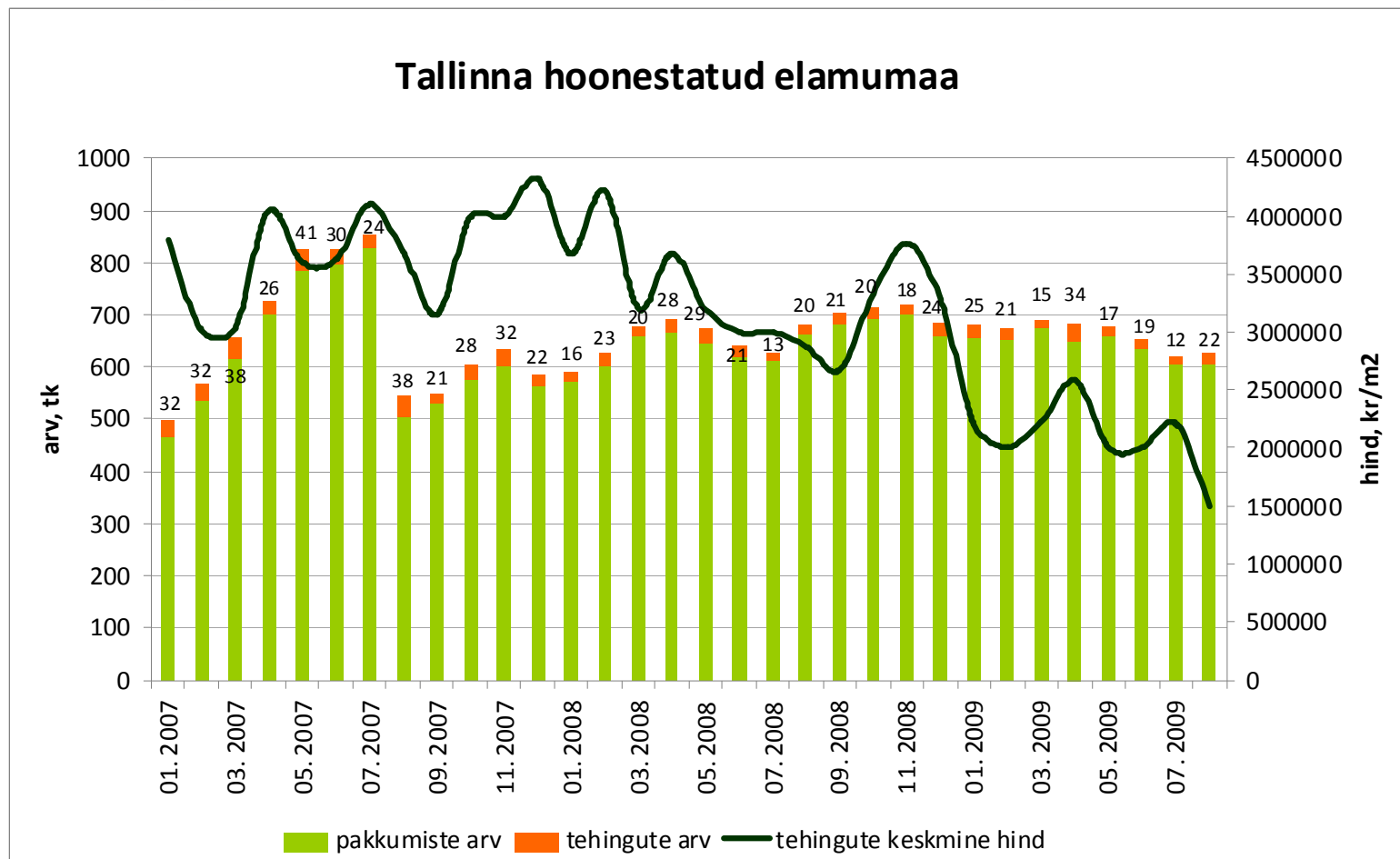


Tehingute arv on langenud 60%,
tehinguhind 51%



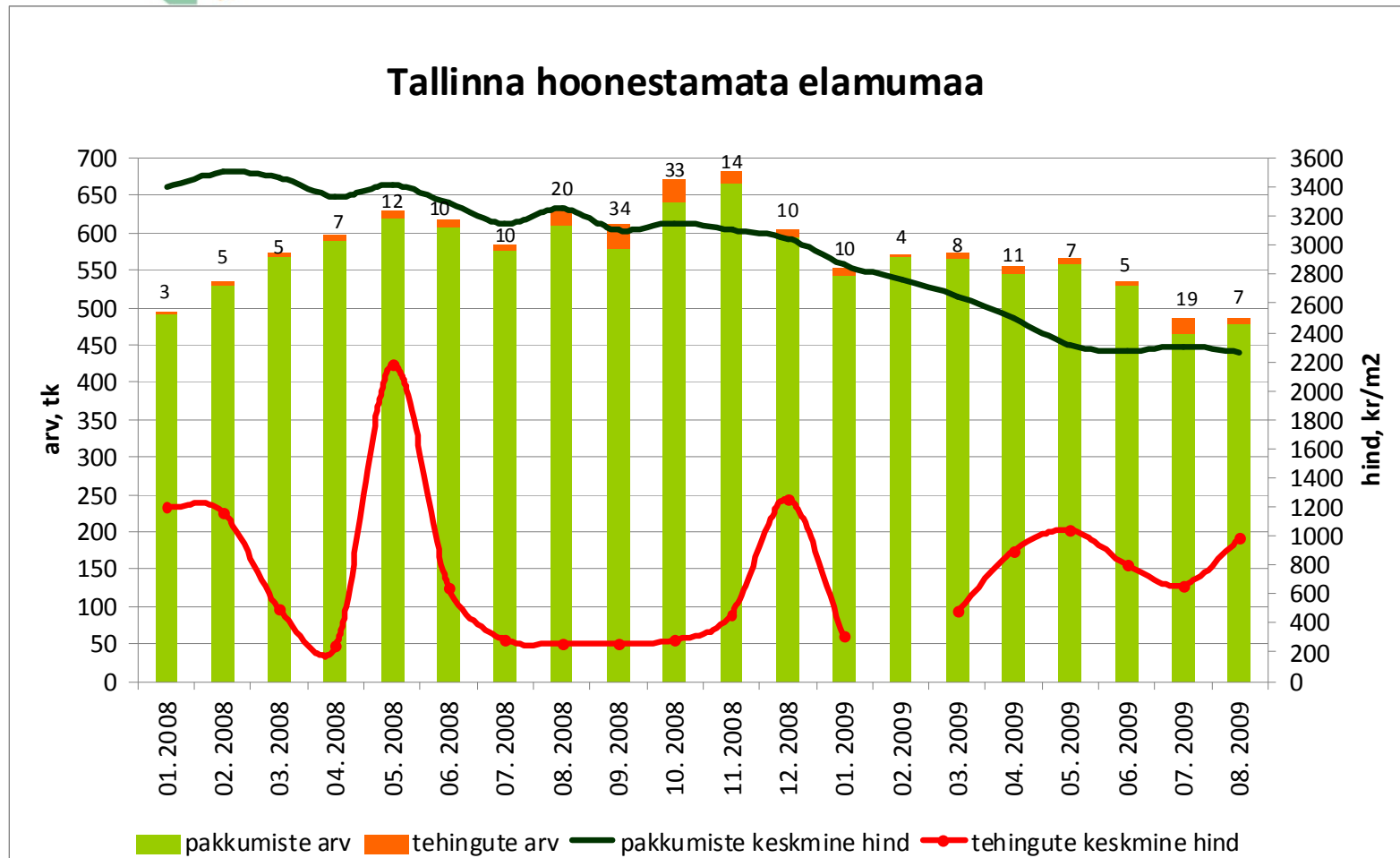
Allikad: Maa-amet, City24

Tehingute arv on 2006.a. märtsist
langenud 70%, tehinguhind
2007.a. dets-st 65%



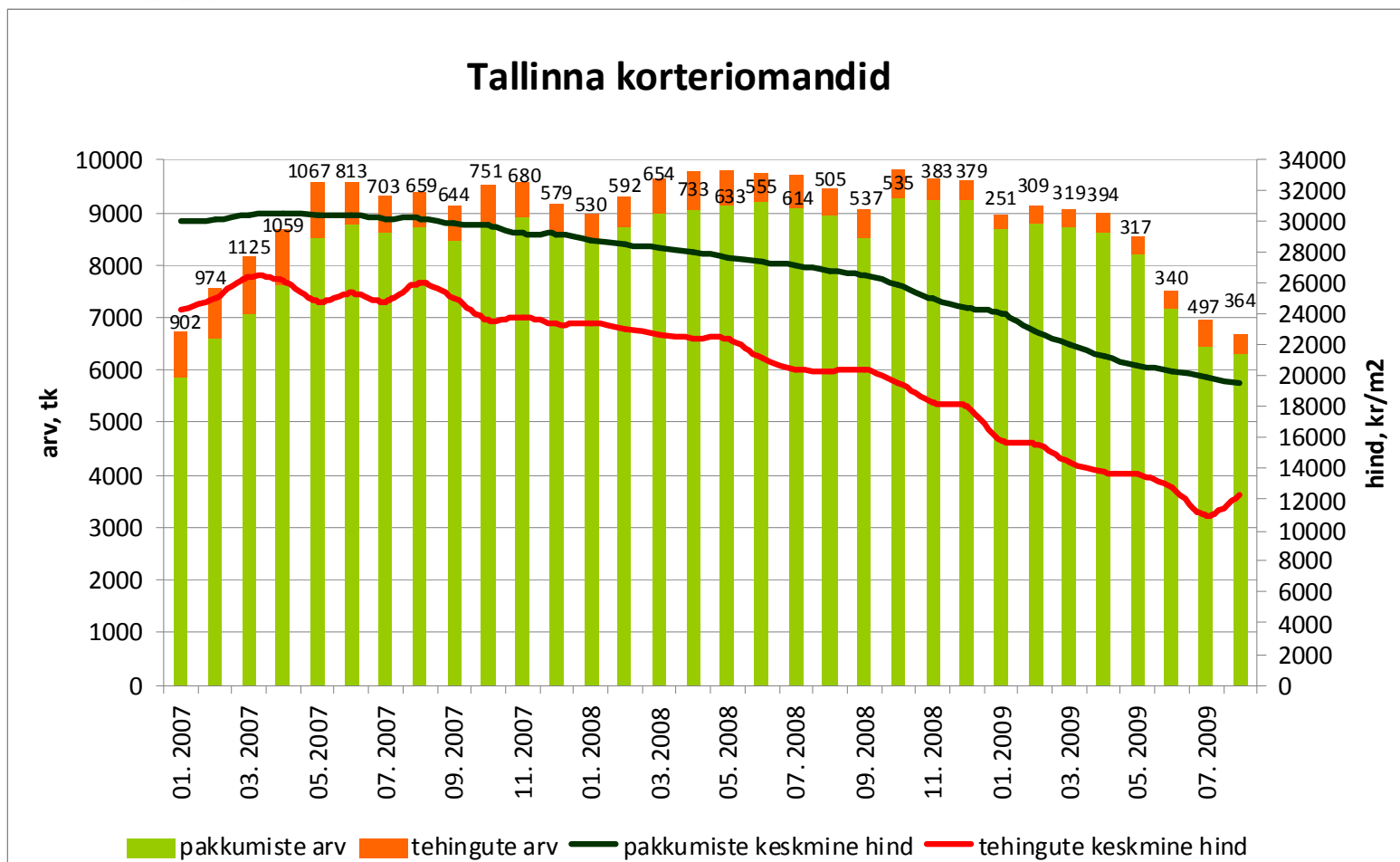
Allikad: Maa-amet, City24

Tehingute arv on 2006.a. maist langenud 74%, tehinguhind 2007.a. juunist 64%



Allikad: Maa-amet, City24

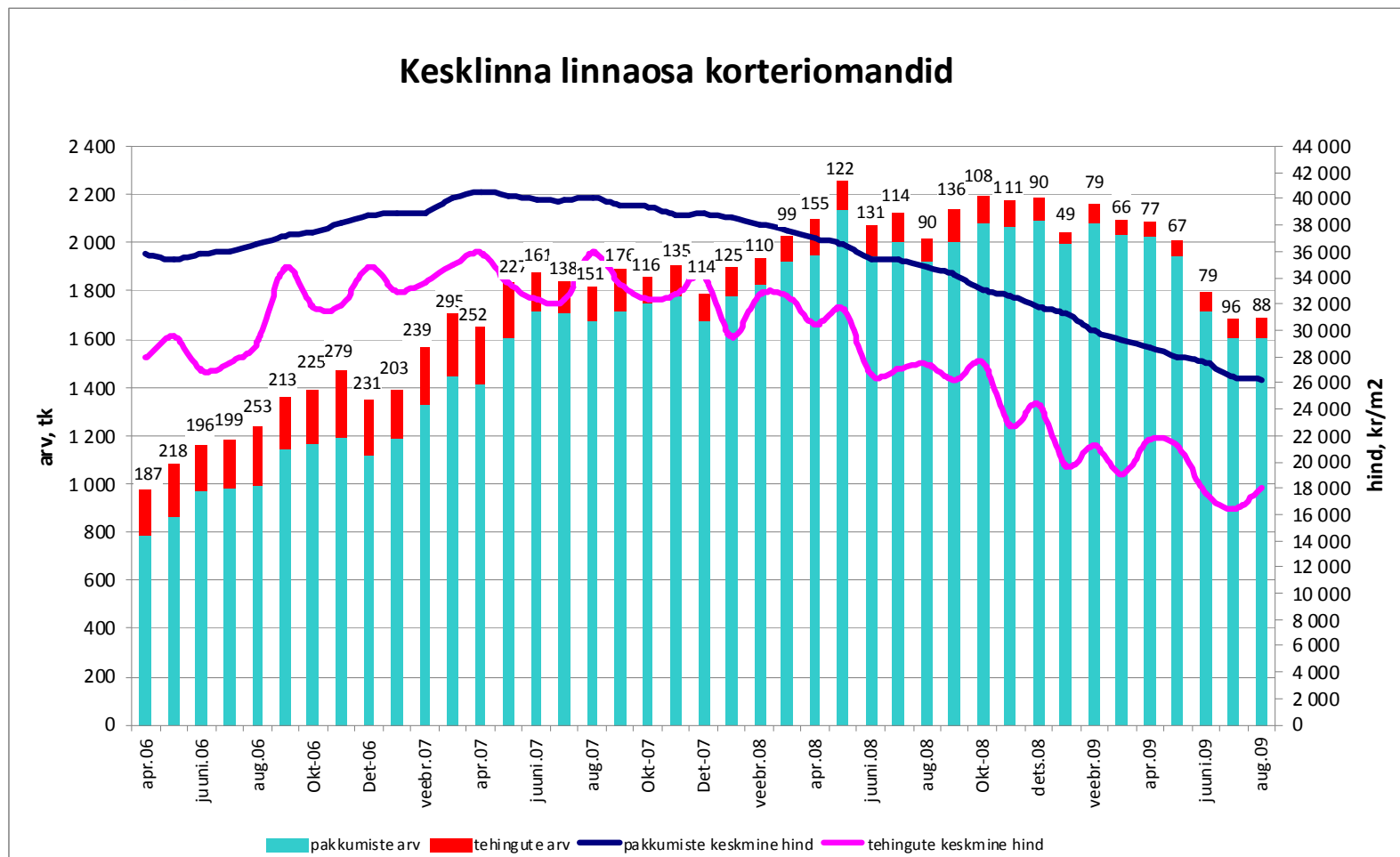
Tehingute arv on langenud 68%,
tehinguhind 53% (august +12%)



Allikad: Maa-amet, City24

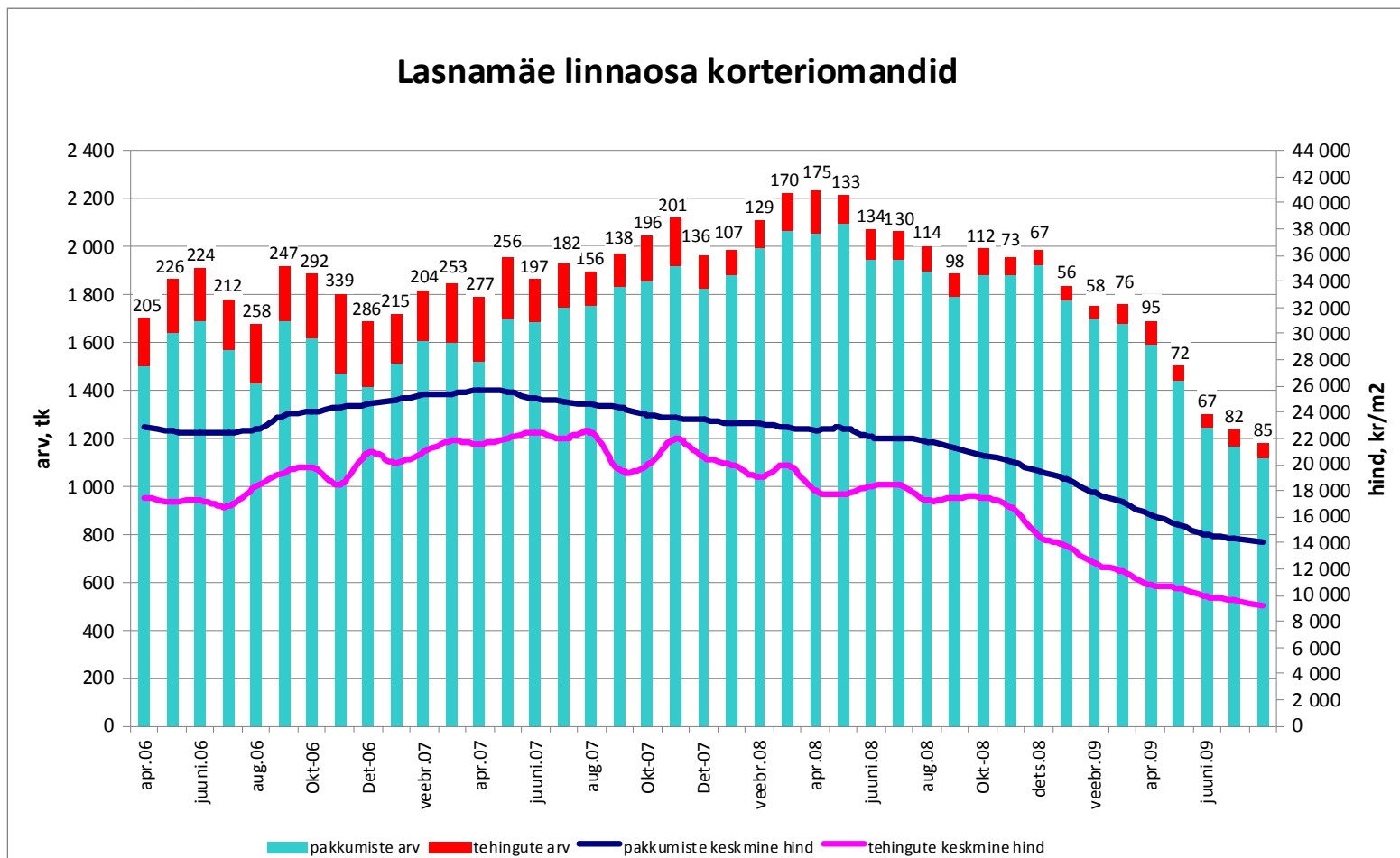
Tehingute arv on langenud 70%,
tehinguhind 50% (august +9,8%)

Kesklinna linnaosa korteriomandid



Allikad: Maa-amet, City24

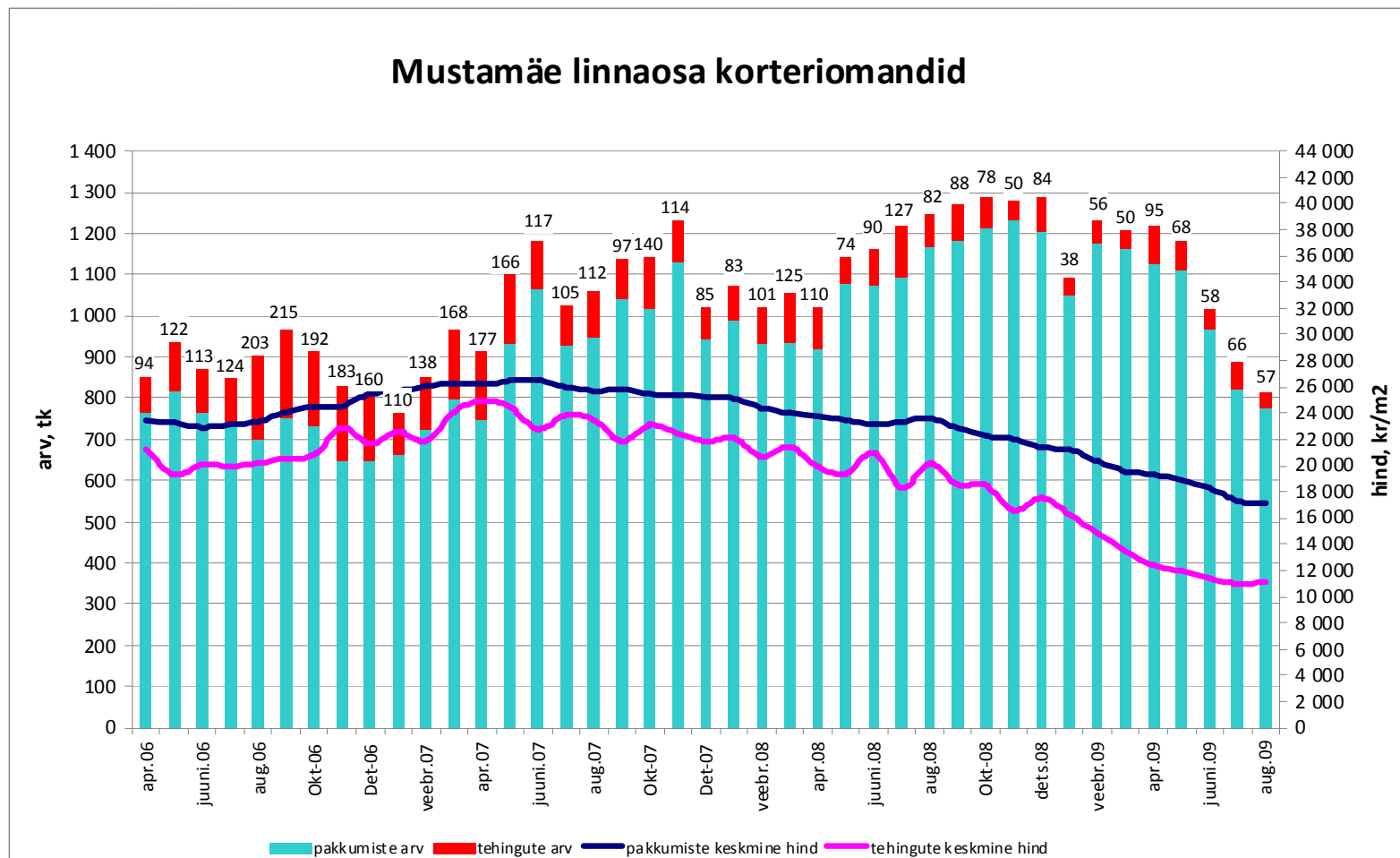
Tehingute arv on langenud 75%,
tehinguhind 59% (august -4,3%)



Allikad: Maa-amet, City24

Tehingute arv on langenud 73%,
tehinguhind 55% (august +1%)

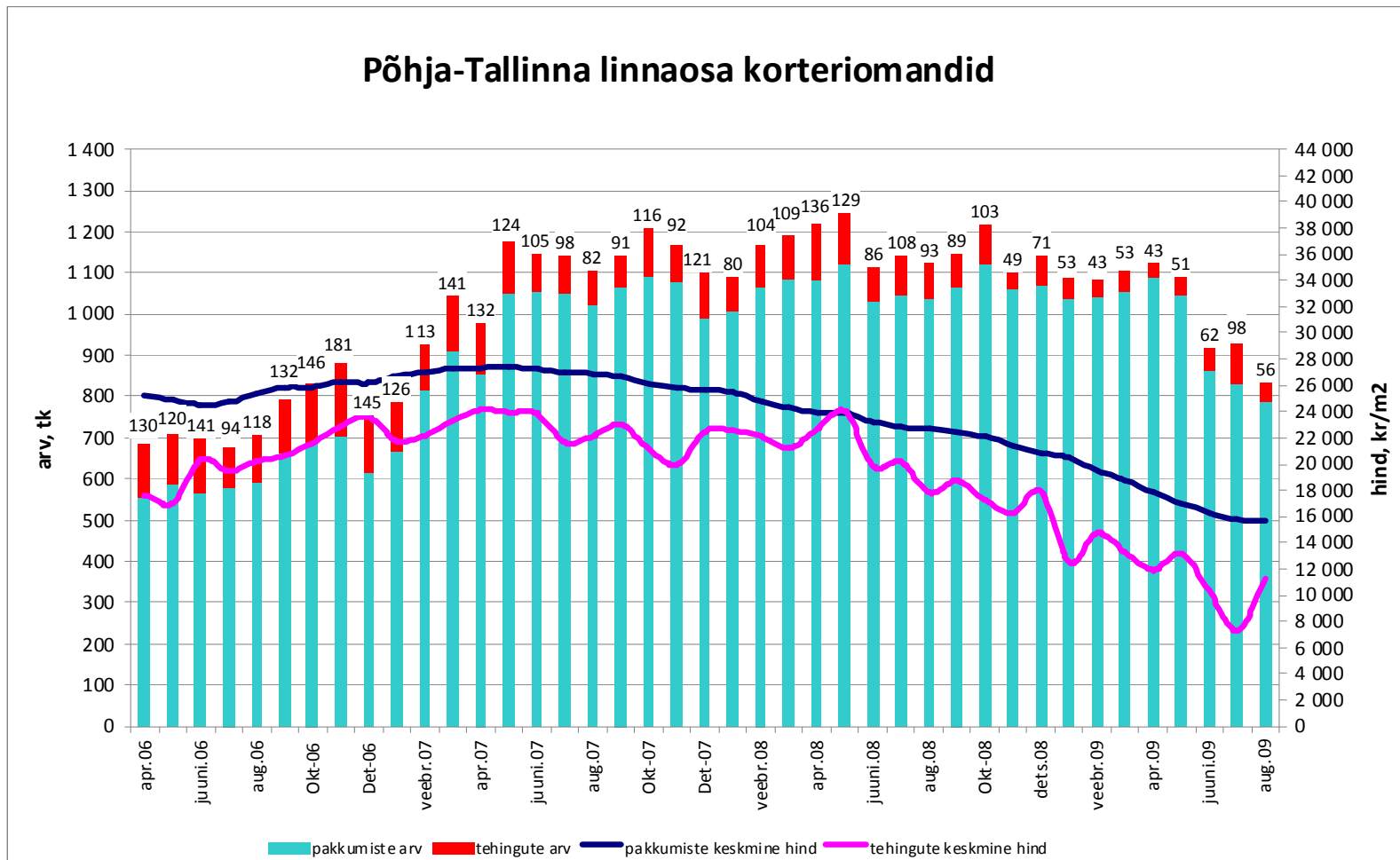
Mustamäe linnaosa korteriomandid



Allikad: Maa-amet, City24

Tehingute arv on langenud 69%,
tehinguhind 54% (august +54%)

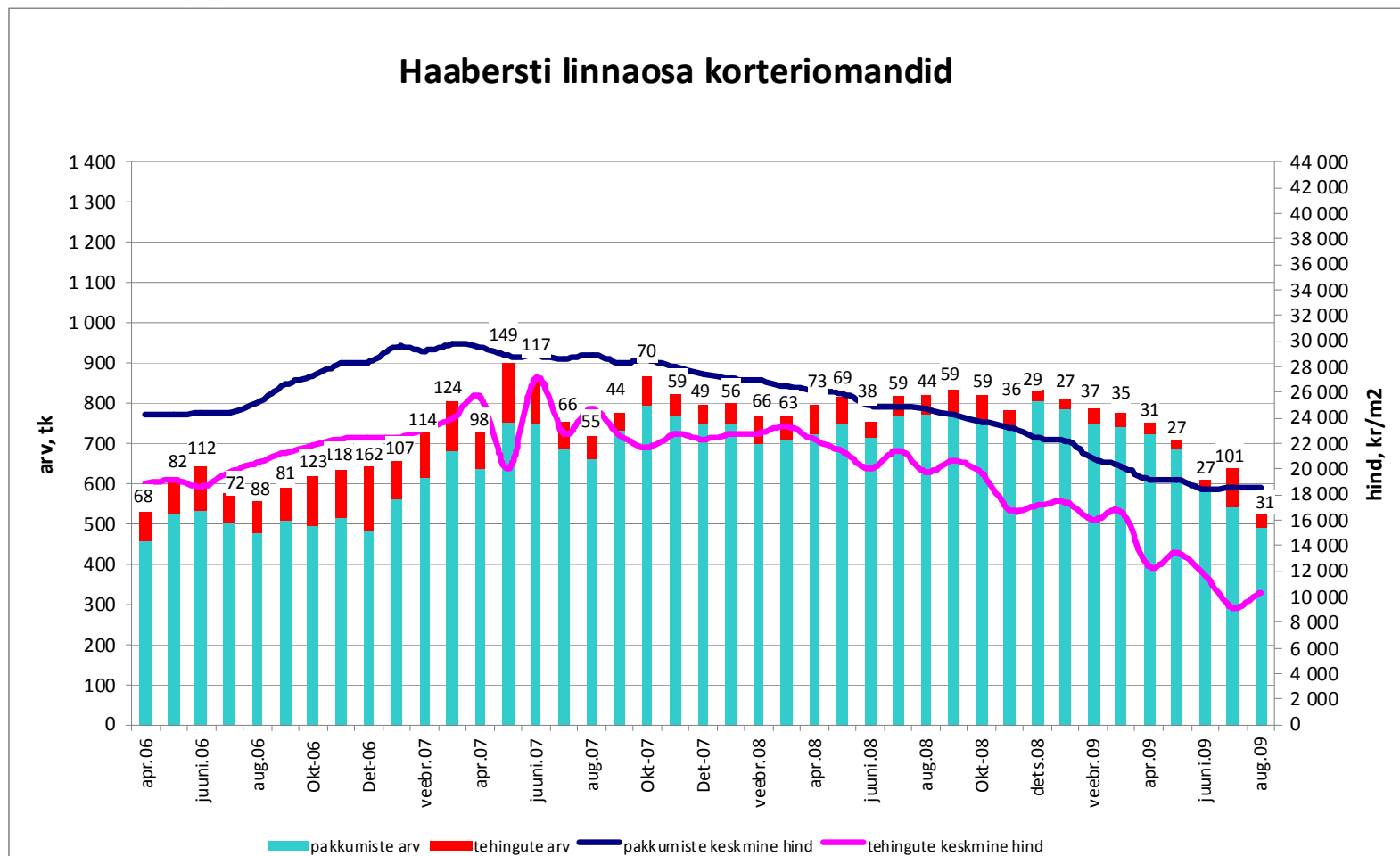
Põhja-Tallinna linnaosa korteriomandid



Allikad: Maa-amet, City24

Tehingute arv on langenud 81%,
tehinguhind 62% (august +12%)

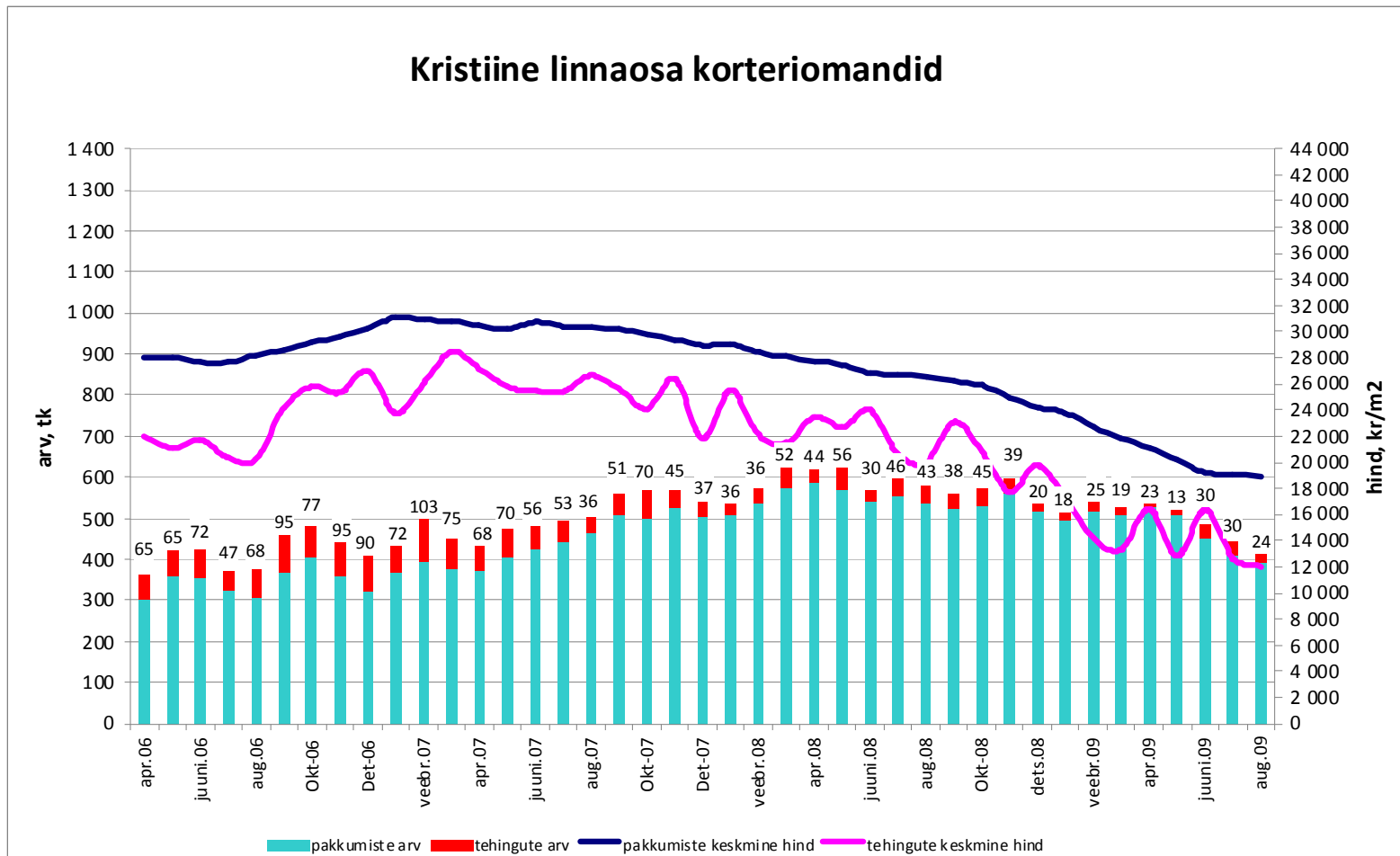
Haabersti linnaosa korteriomandid



Allikad: Maa-amet, City24

Tehingute arv on langenud 77%,
tehinguhind 58% (august -4,9%)

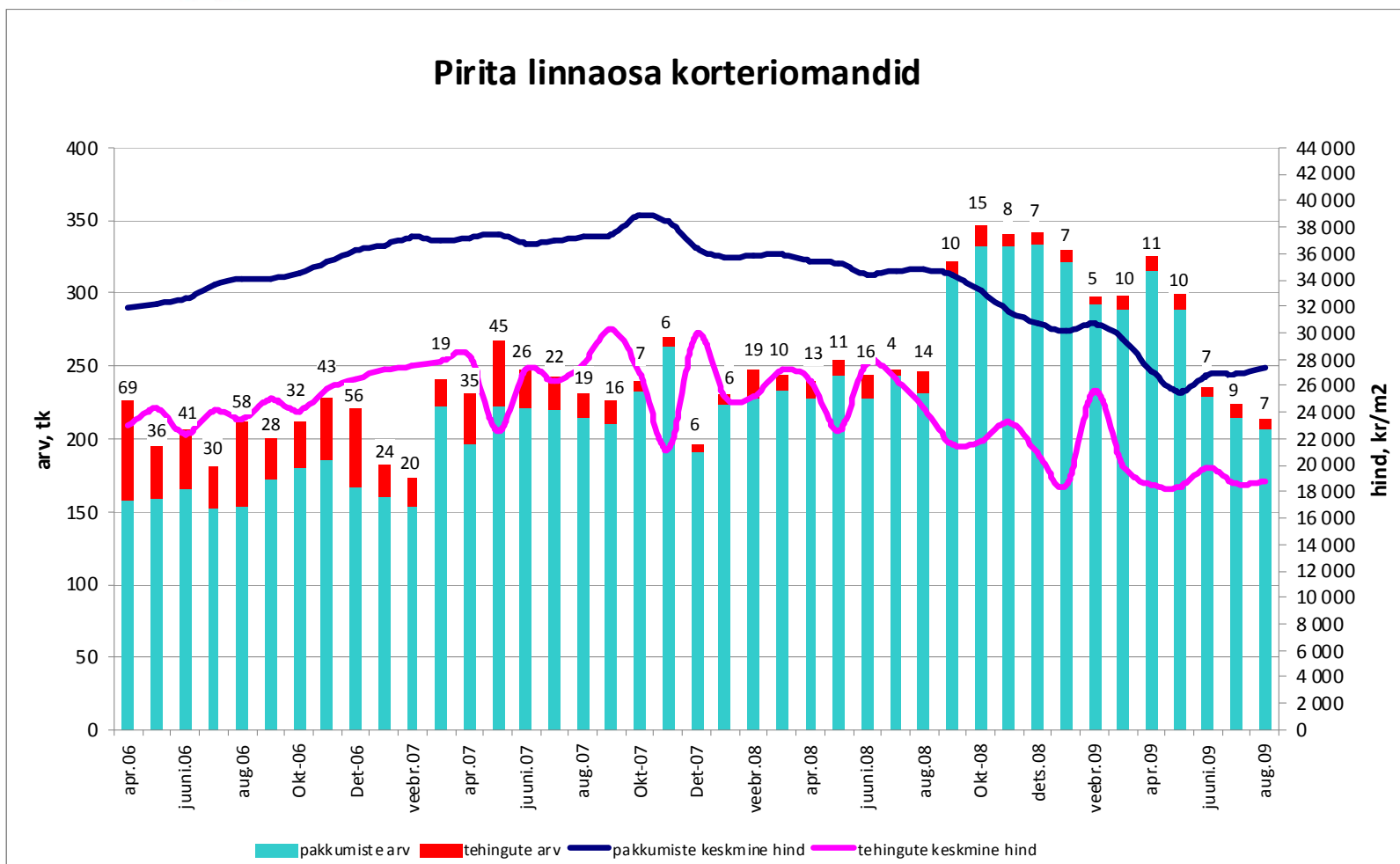
Kristiine linnaosa korteriomandid



Allikad: Maa-amet, City24

Tehingute arv on langenud 90%,
tehinguhind 38% (august +1,1%)

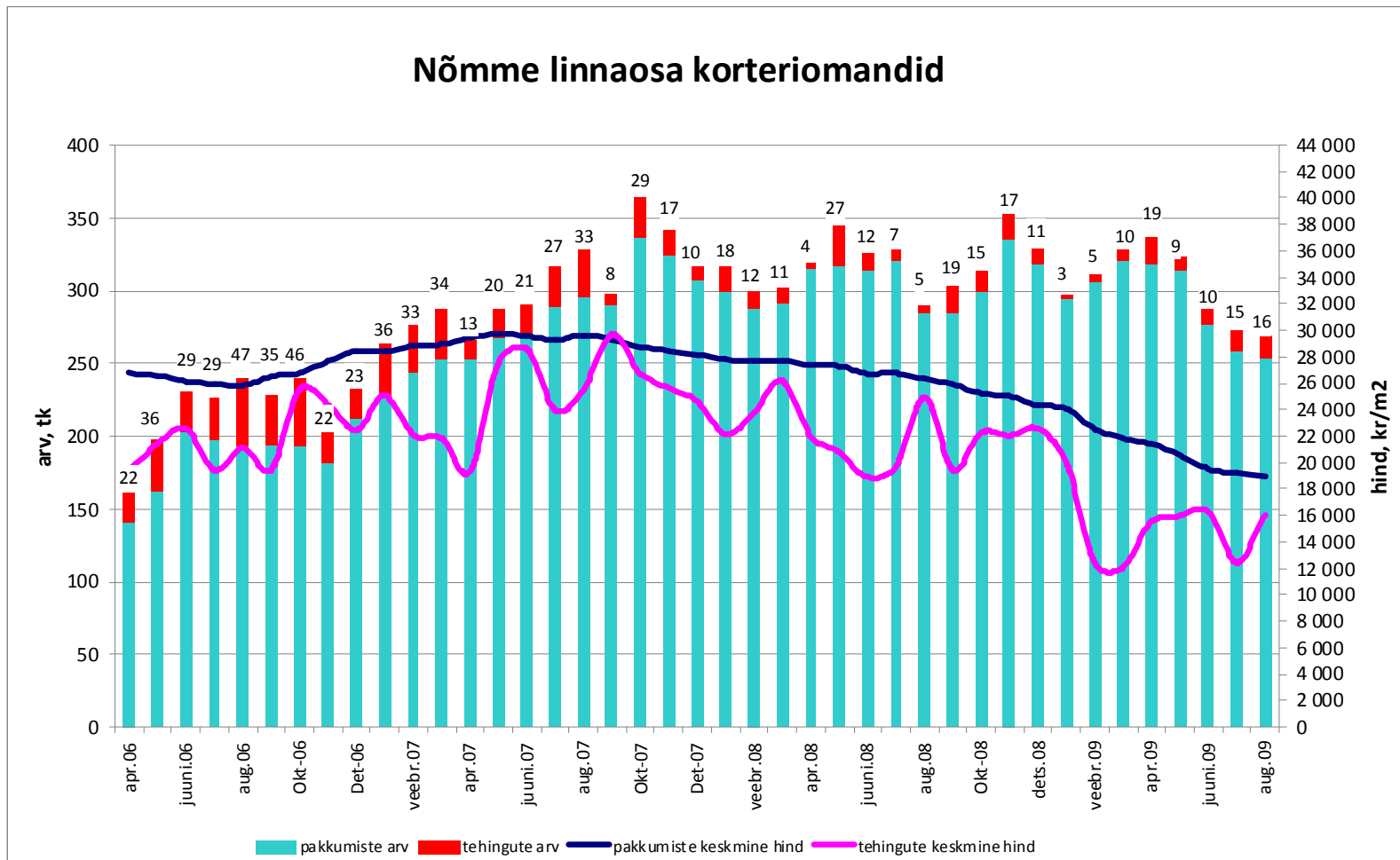
Pirita linnaosa korteriomandid



Allikad: Maa-amet, City24

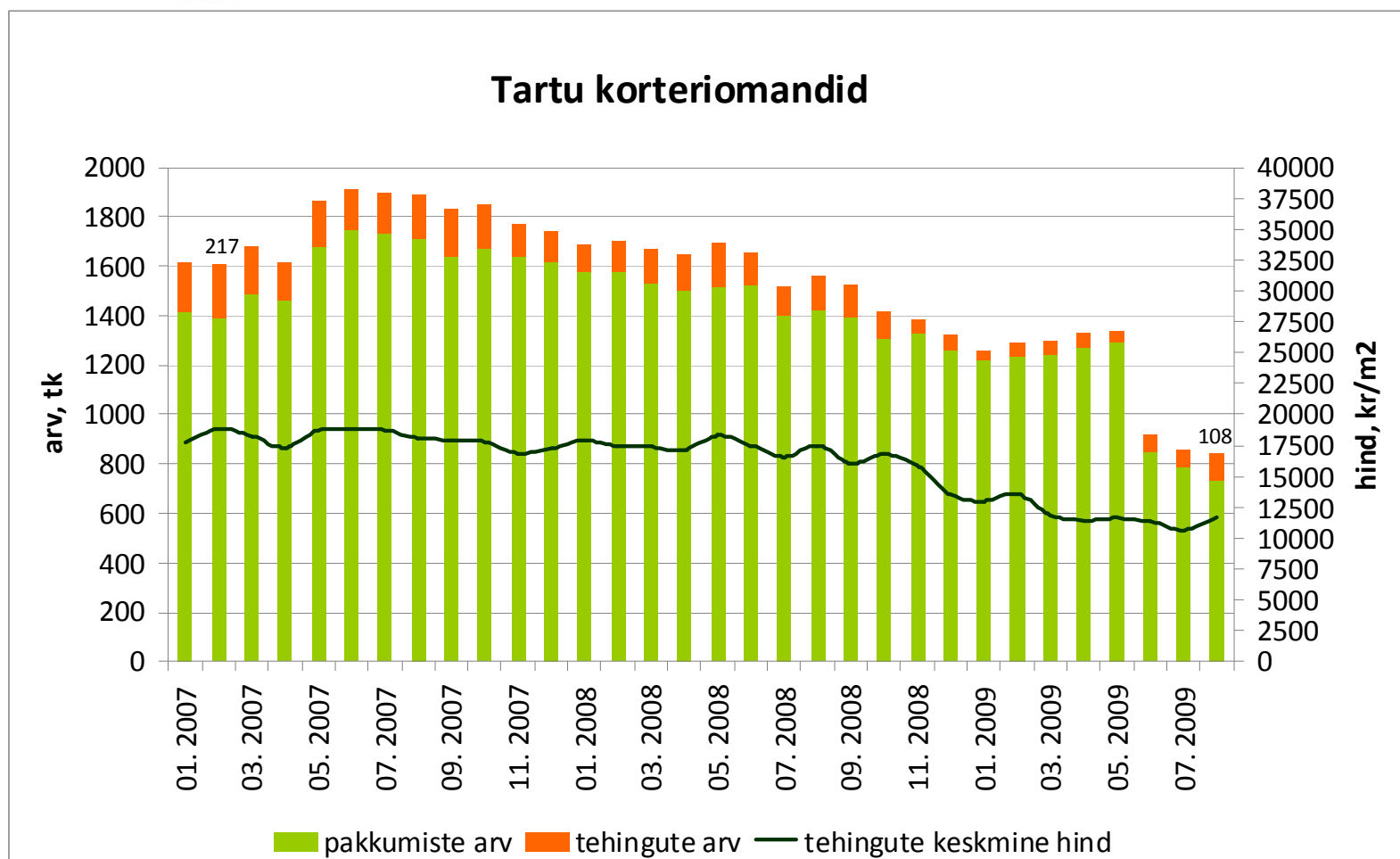
Tehingute arv on langenud 66%,
tehinguhind 46% (august +29,1%)

Nõmme linnaosa korteriomandid



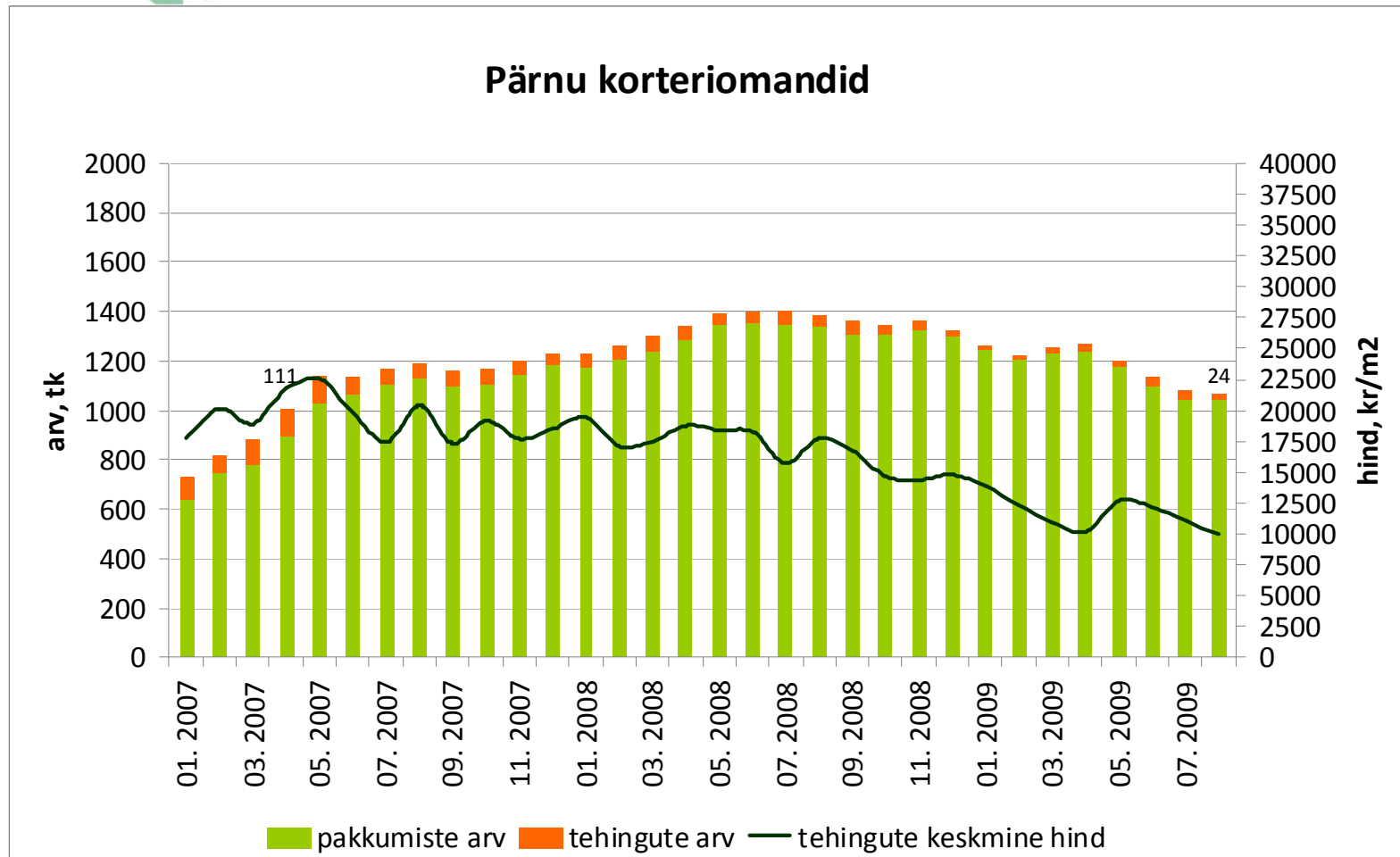
Allikad: Maa-amet, City24

Tehingute arv on langenud 50%,
tehinguhind 38% (august +9,4%)



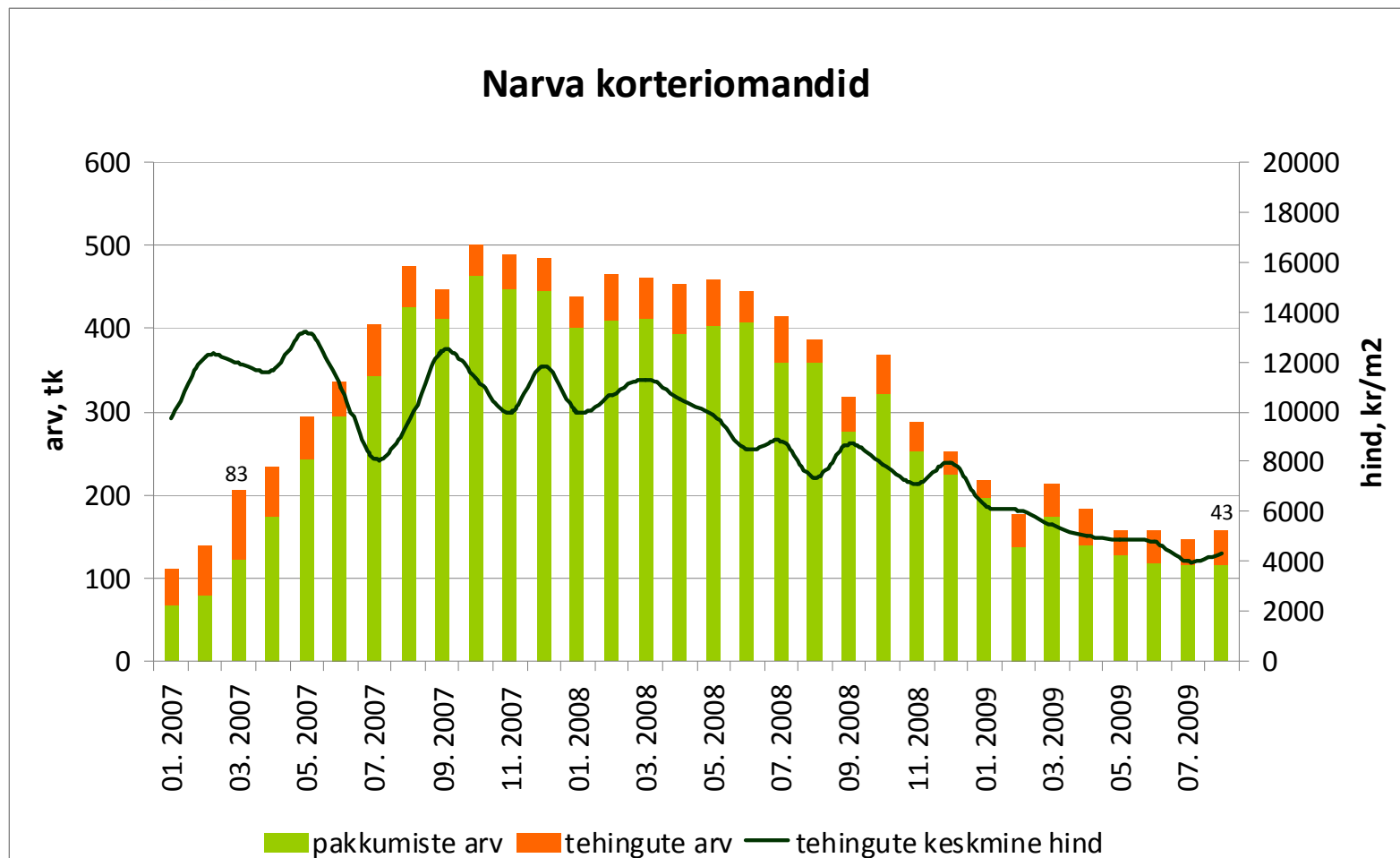
Allikad: Maa-amet, City24

Tehingute arv on langenud 78%,
tehinguhind 56% (august -10%)



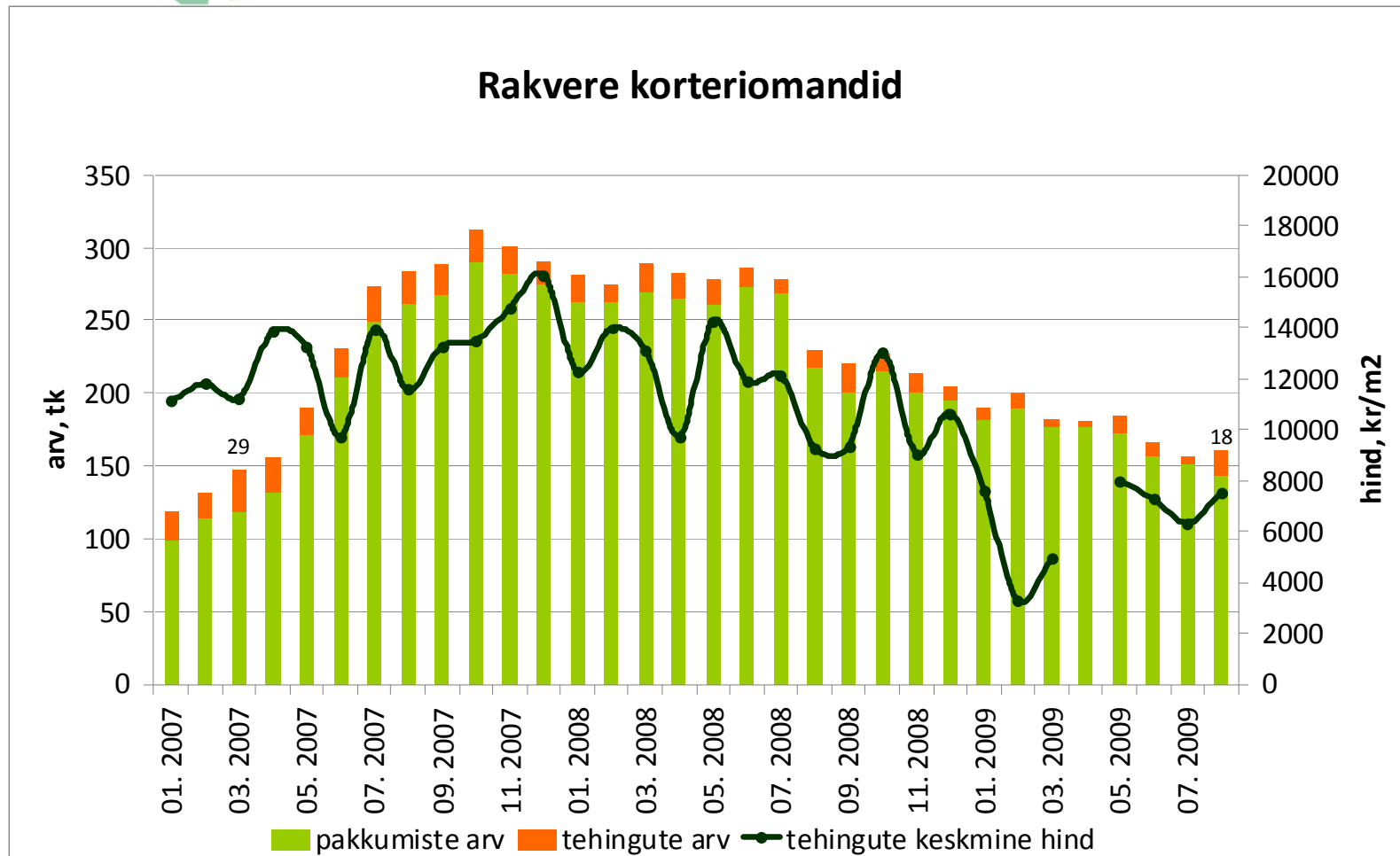
Allikad: Maa-amet, City24

Tehingute arv on langenud 48%,
tehinguhind 67% (august +7,2%)



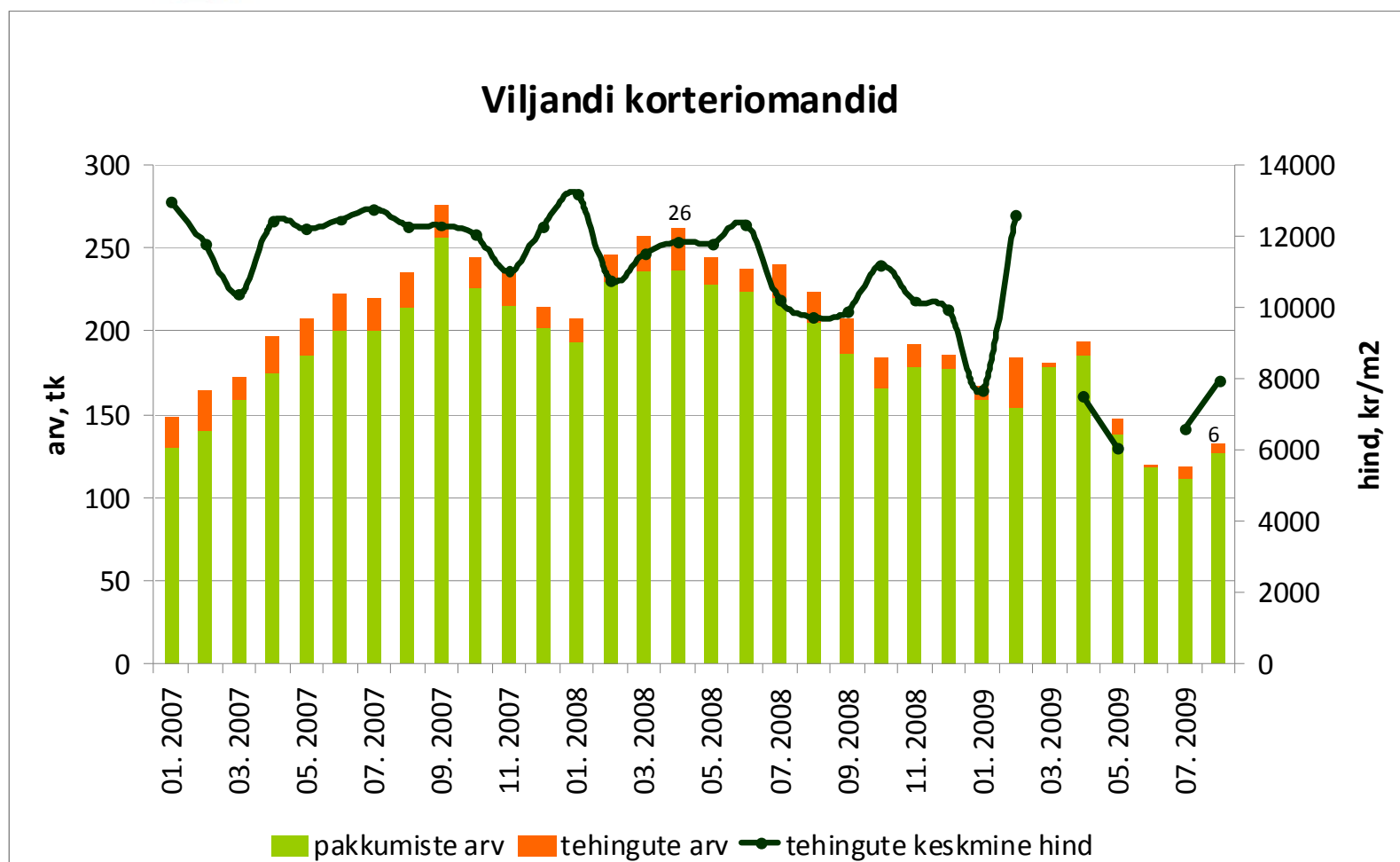
Allikad: Maa-amet, City24

Tehingute arv on langenud 38%,
tehinguhind 53% (august +18,6%)



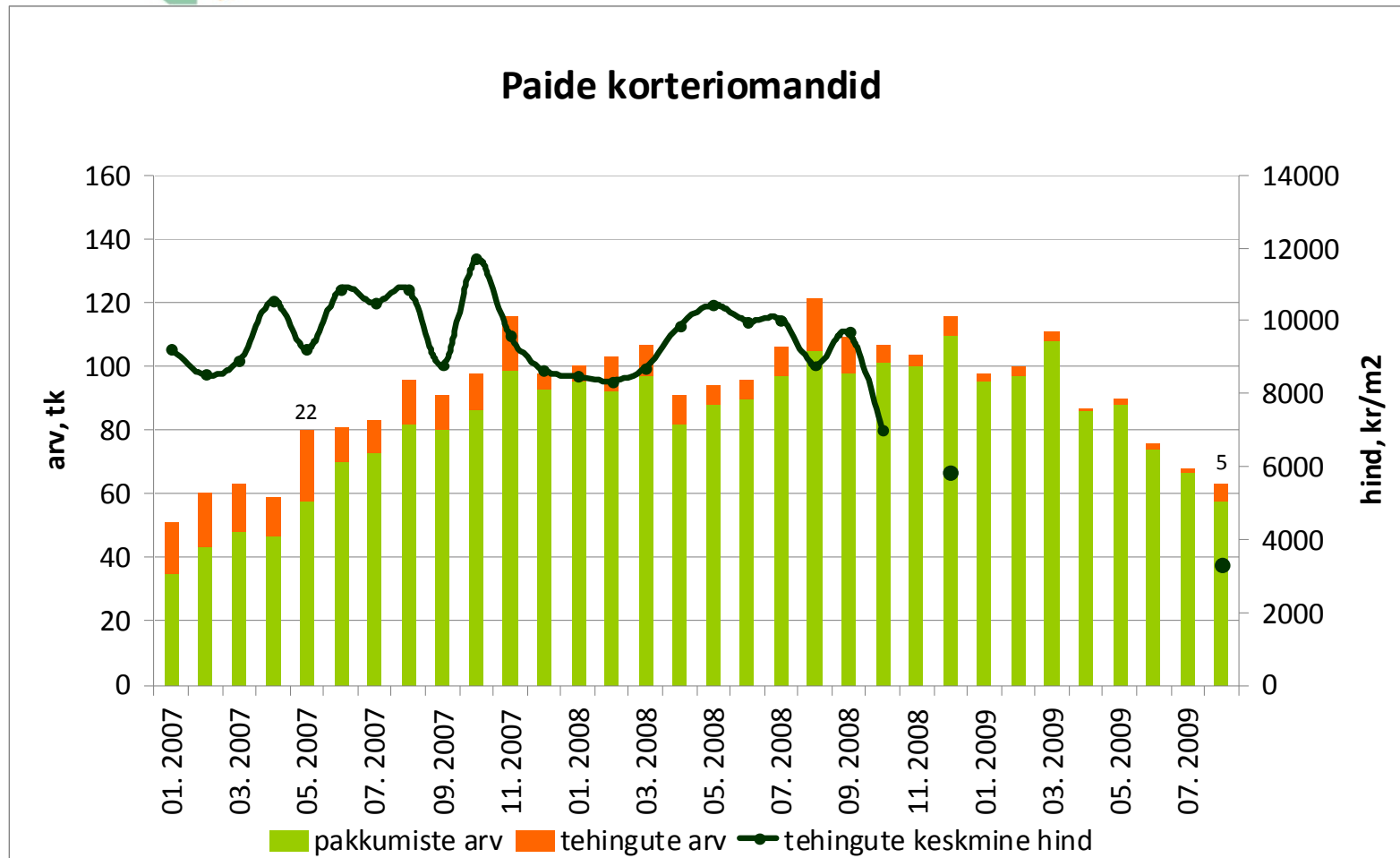
Allikad: Maa-amet, City24

Tehingute arv on langenud 77%,
tehinguhind 40% (august +20%)



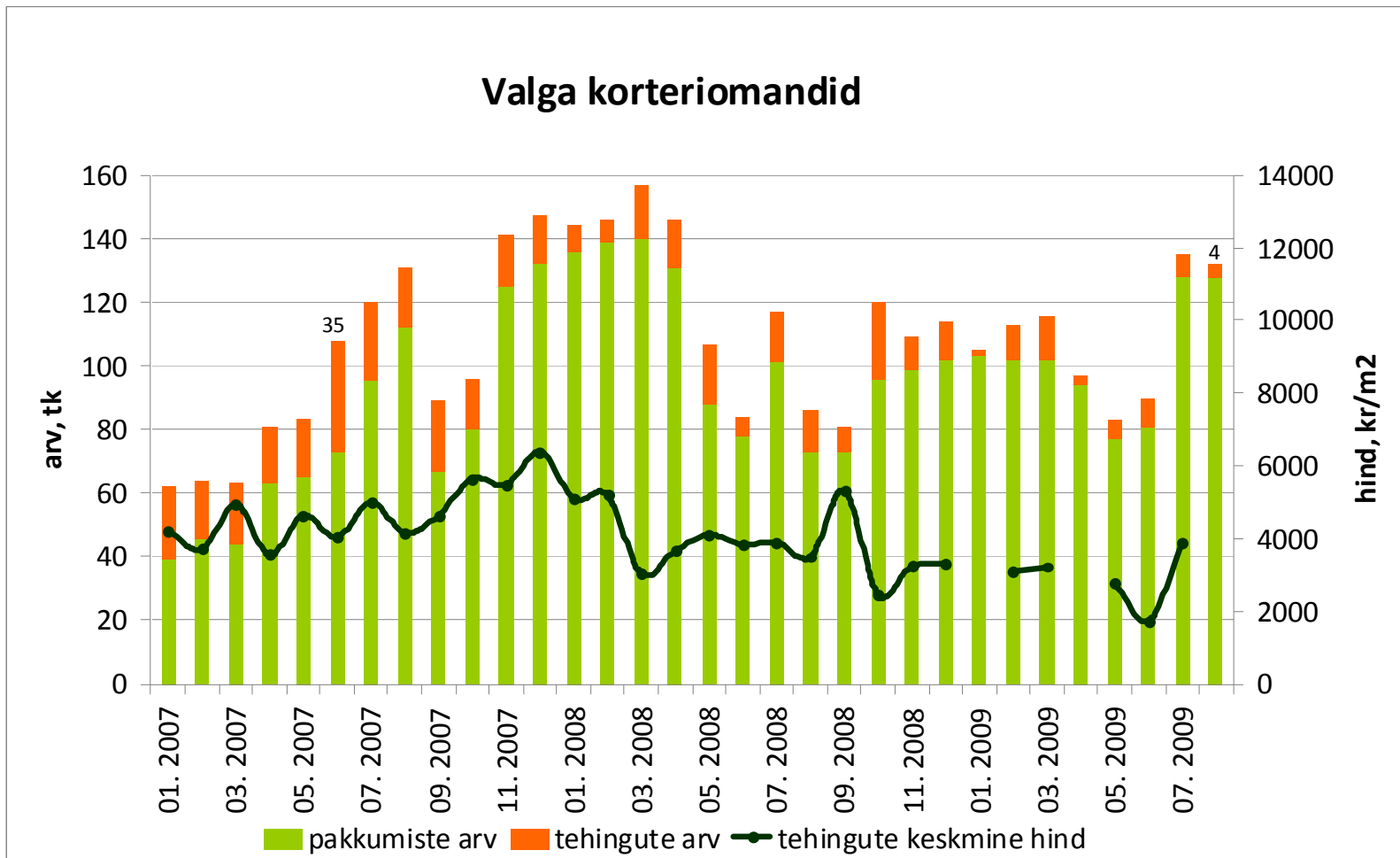
Allikad: Maa-amet, City24

Tehingute arv on langenud 77%,
tehinguhind ca 72%



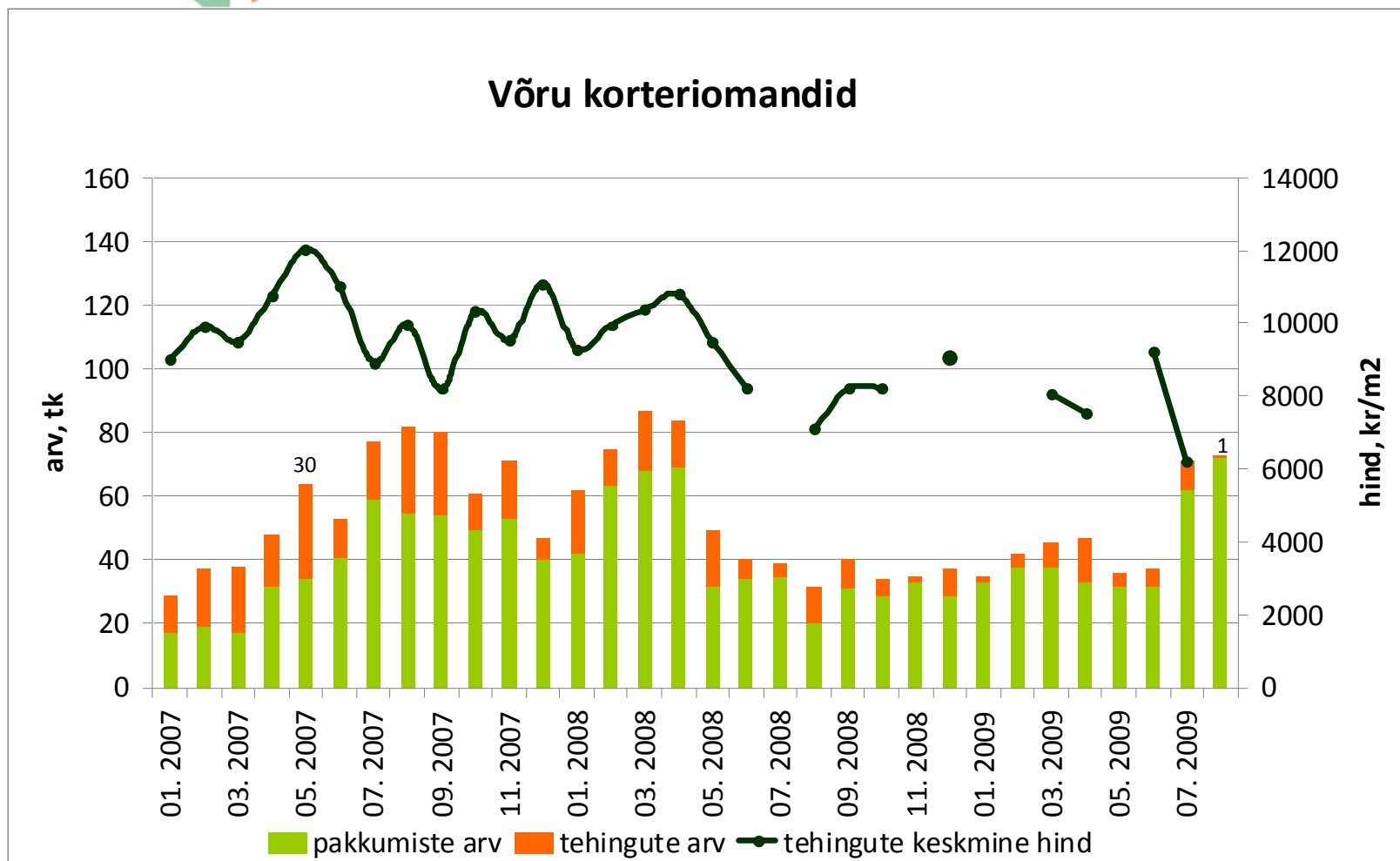
Allikad: Maa-amet, City24

Tehingute arv on langenud 89%,
tehinguhind 39%



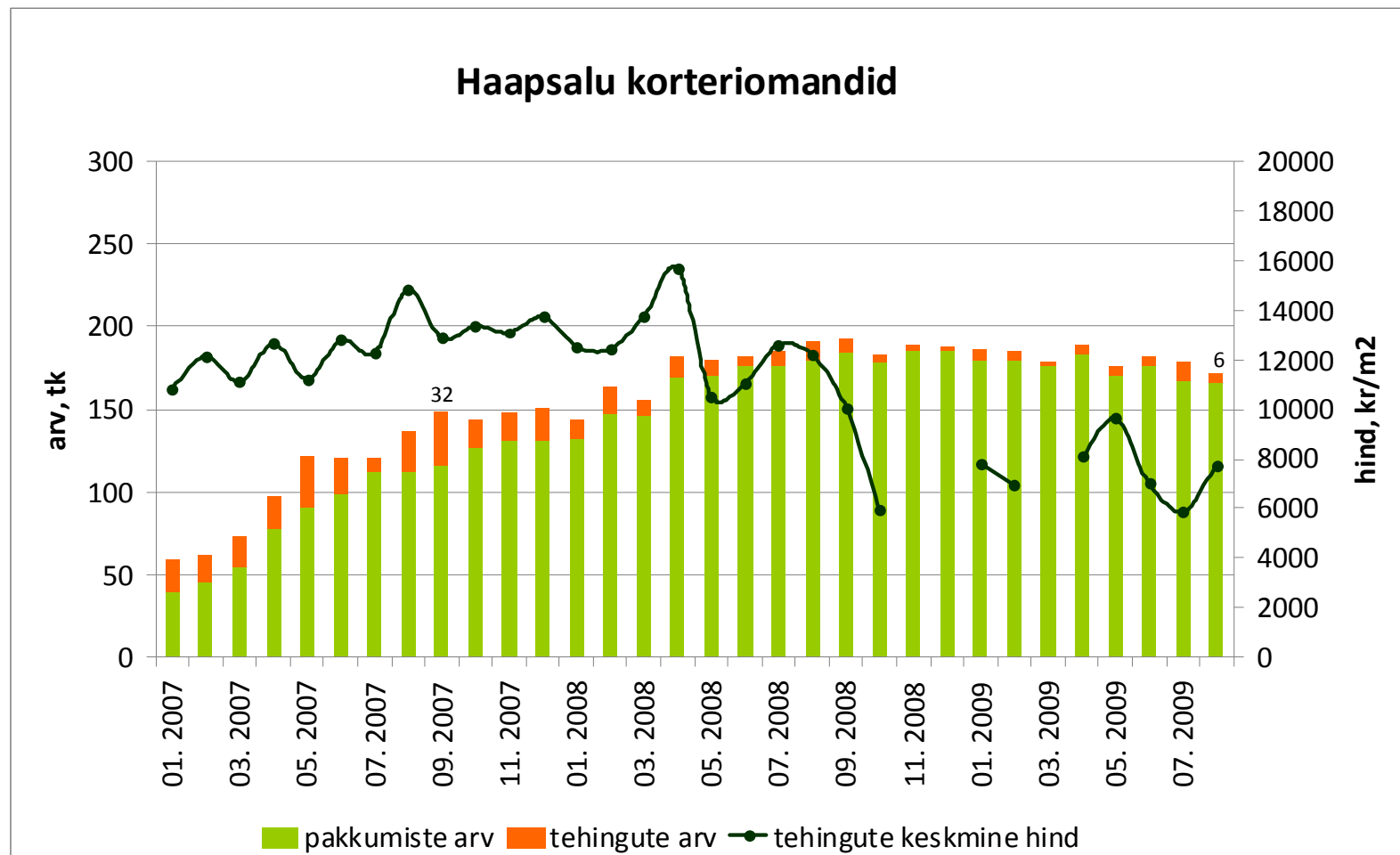
Allikad: Maa-amet, City24

Tehingute arv on langenud 97%
tehinguhind 48%



Allikad: Maa-amet, City24

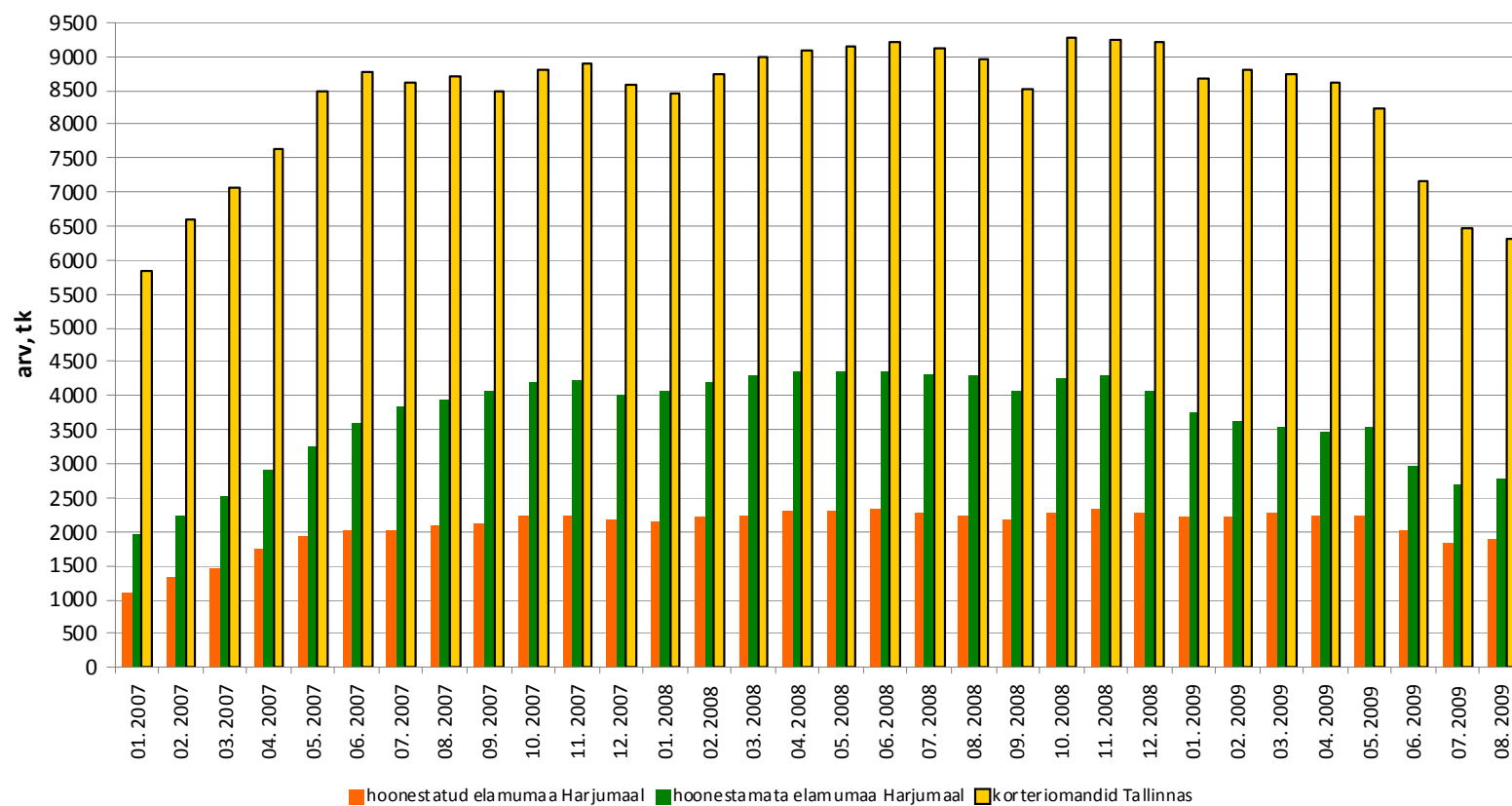
Tehingute arv on langenud 81%,
tehinguhind ca 51% (august +31,7%)



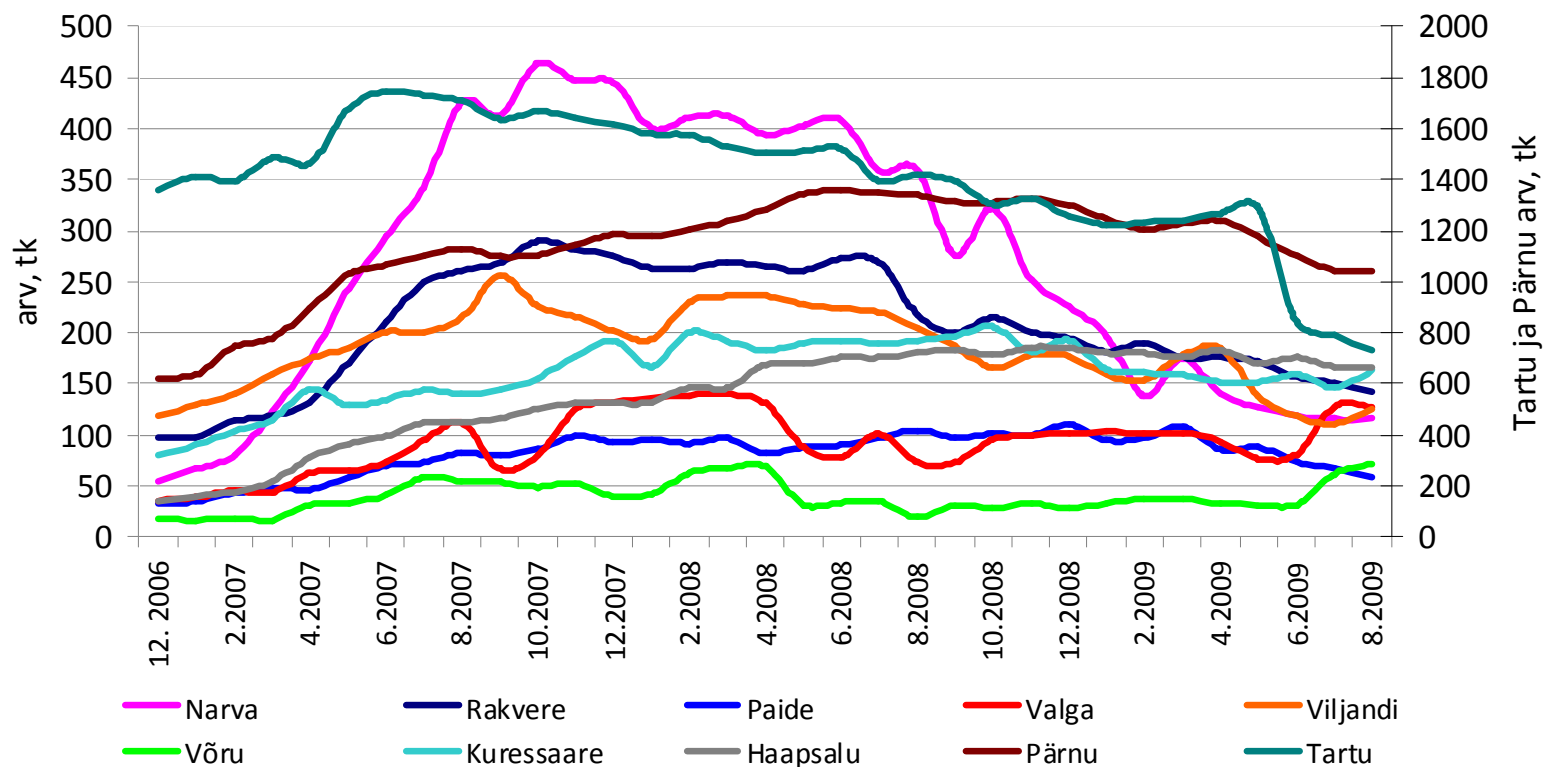
Allikad: Maa-amet, City24



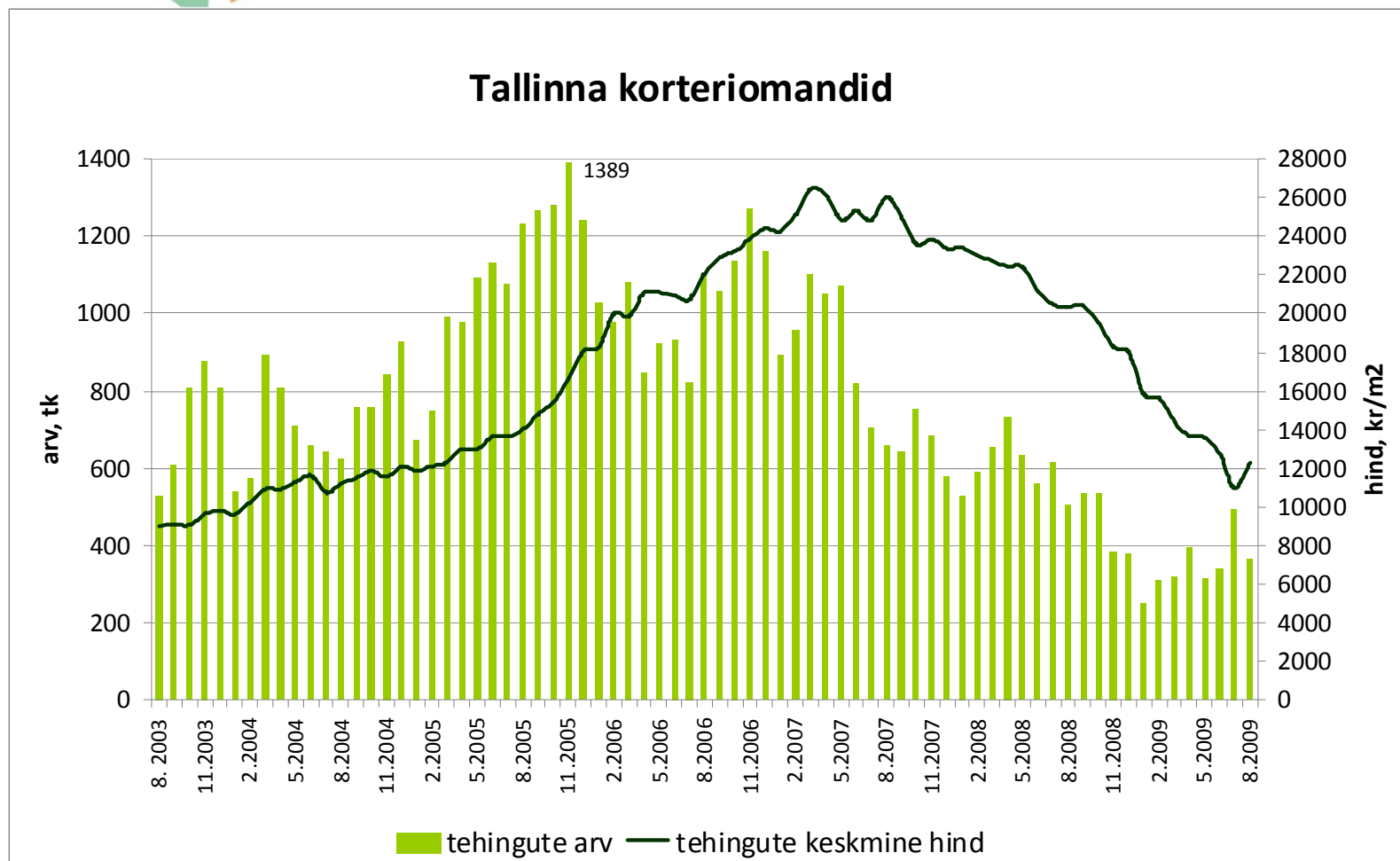
Elukondliku kinnisvara pakkumiste arv



Korteriomandite pakkumiste arv Eesti linnades (City24 baasil)

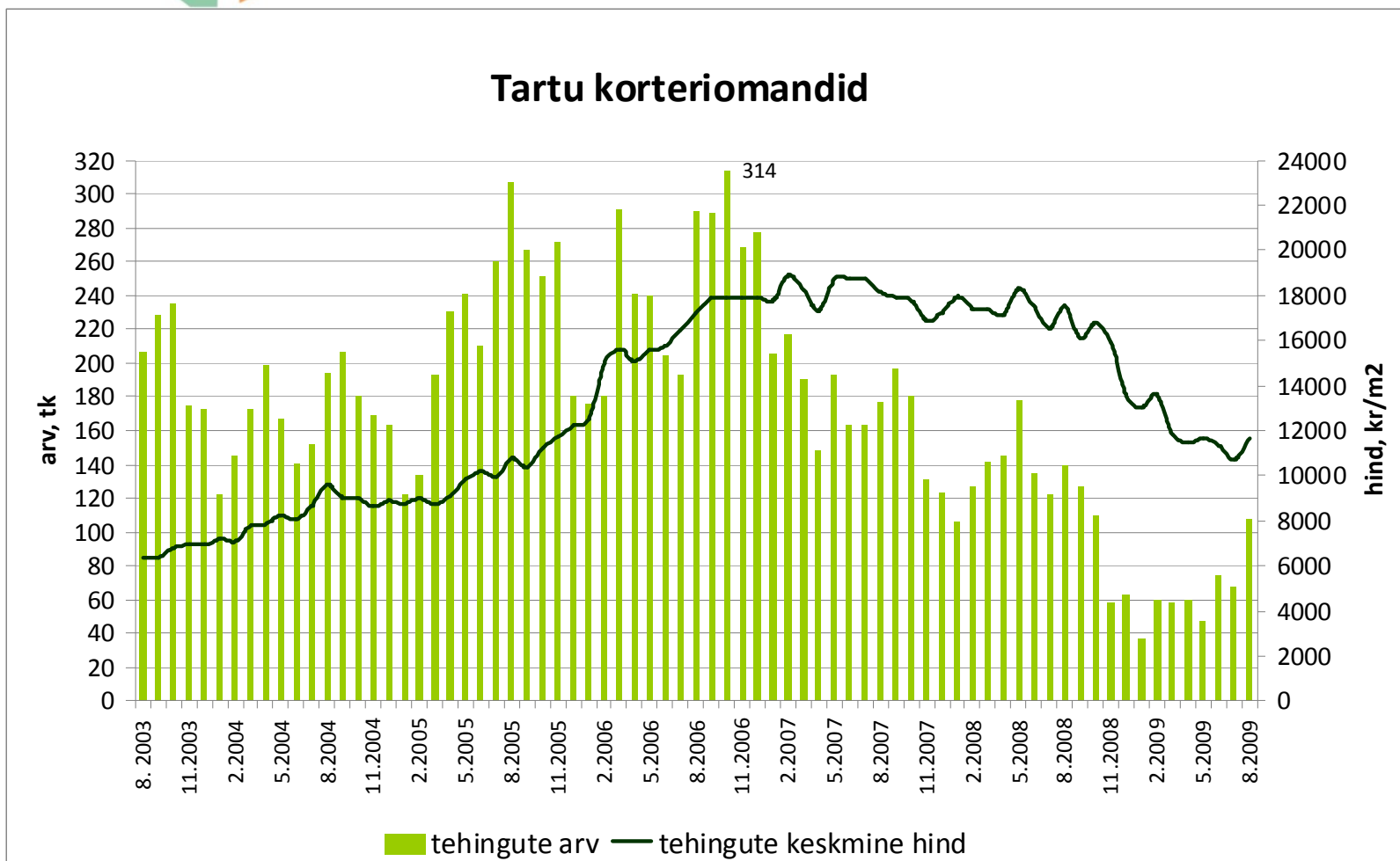


Tehingute arv on langenud 74%,
tehinguhind 53% (august +12,1%)



Allikas: Maa-amet

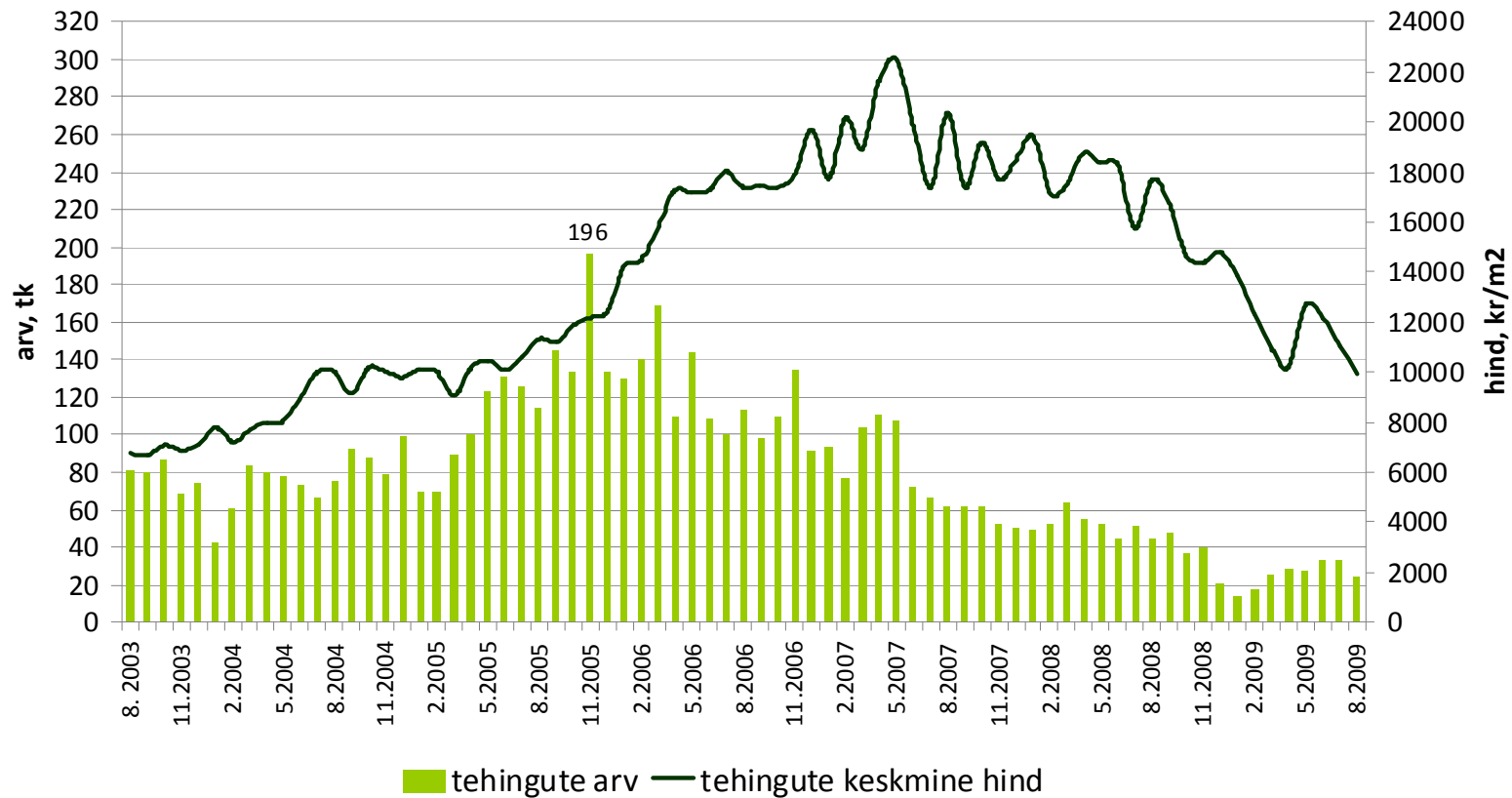
Tehingute arv on langenud 66%,
tehinguhind 38% (august +9,4%)



Allikas: Maa-amet

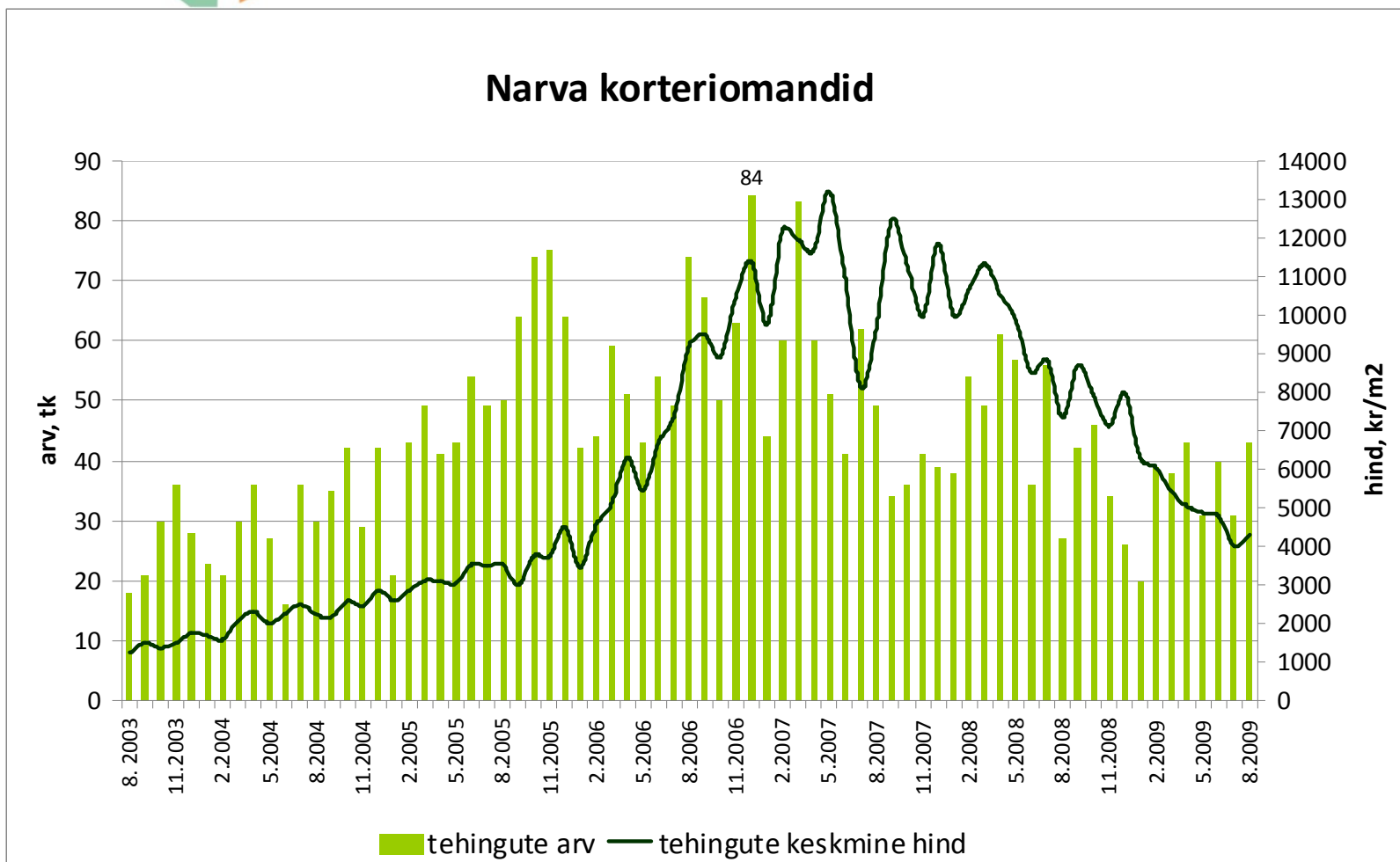
Tehingute arv on langenud 88%,
tehinguhind 56% (august -10%)

Pärnu korteriomandid



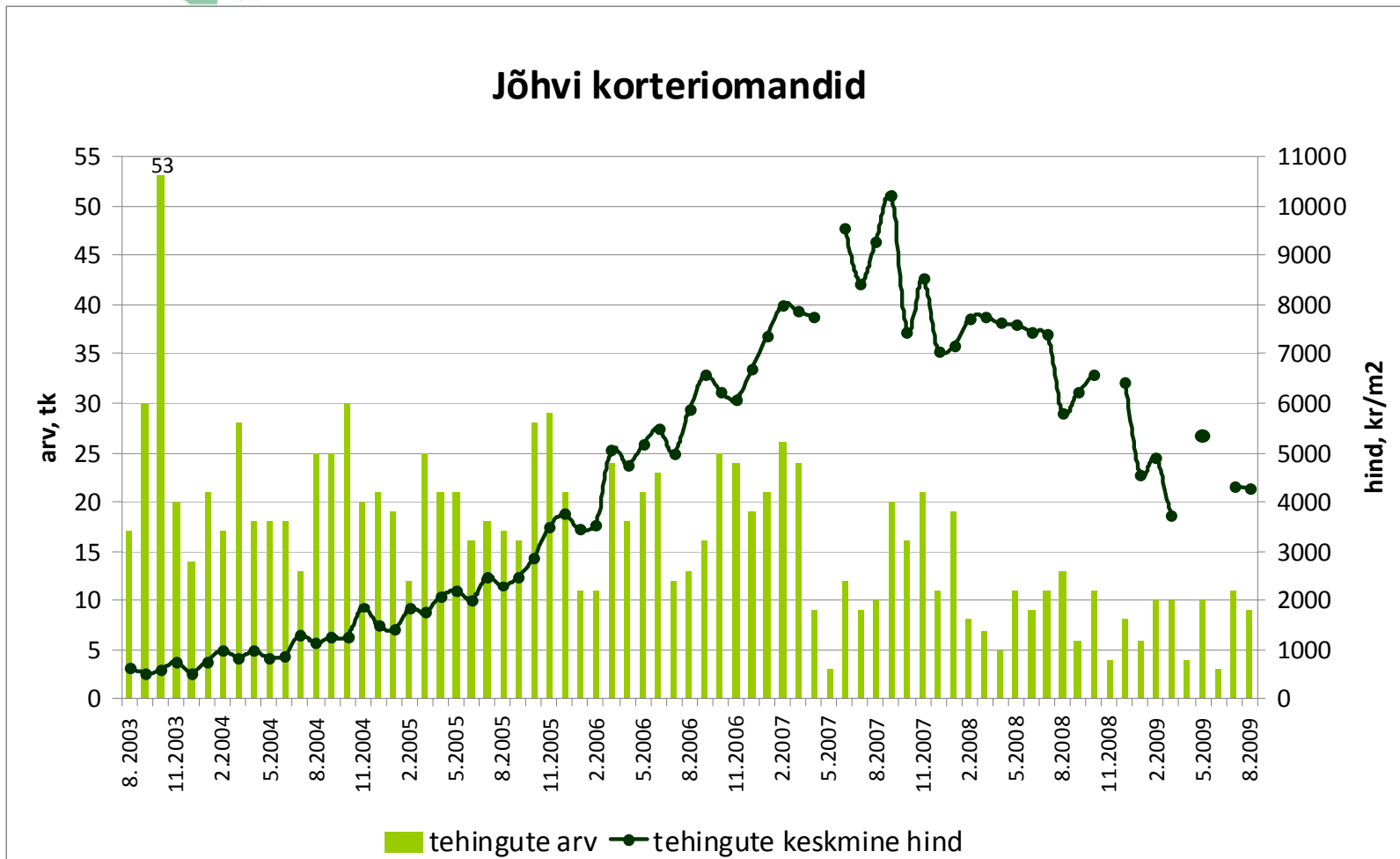
Allikas: Maa-amet

Tehingute arv on langenud 48%,
tehinguhind 67 % (august +7,2%)



Allikas: Maa-amet

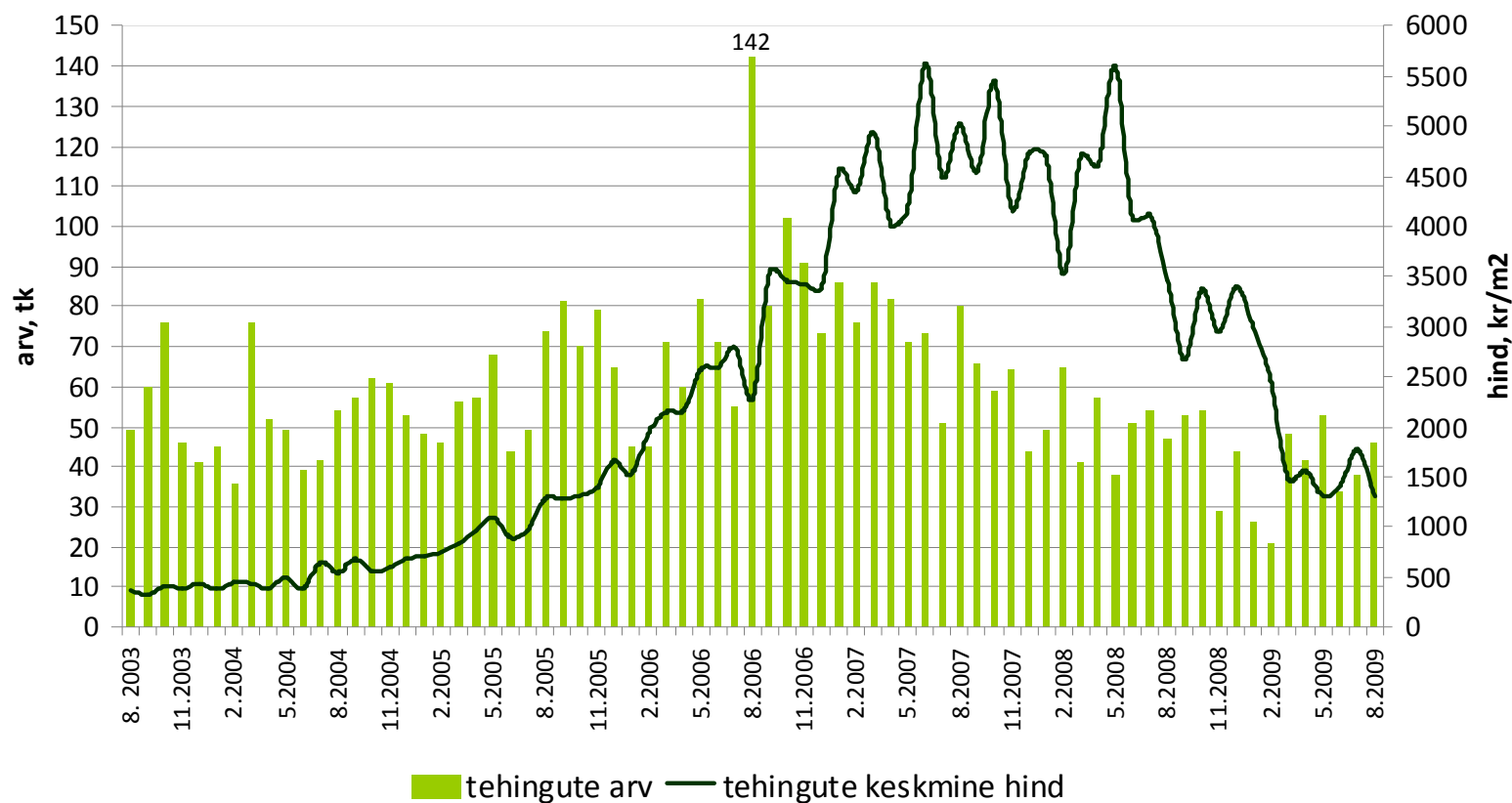
Tehingute arv on langenud 83%,
tehinguhind 58% (august -1,2%)



Allikas: Maa-amet

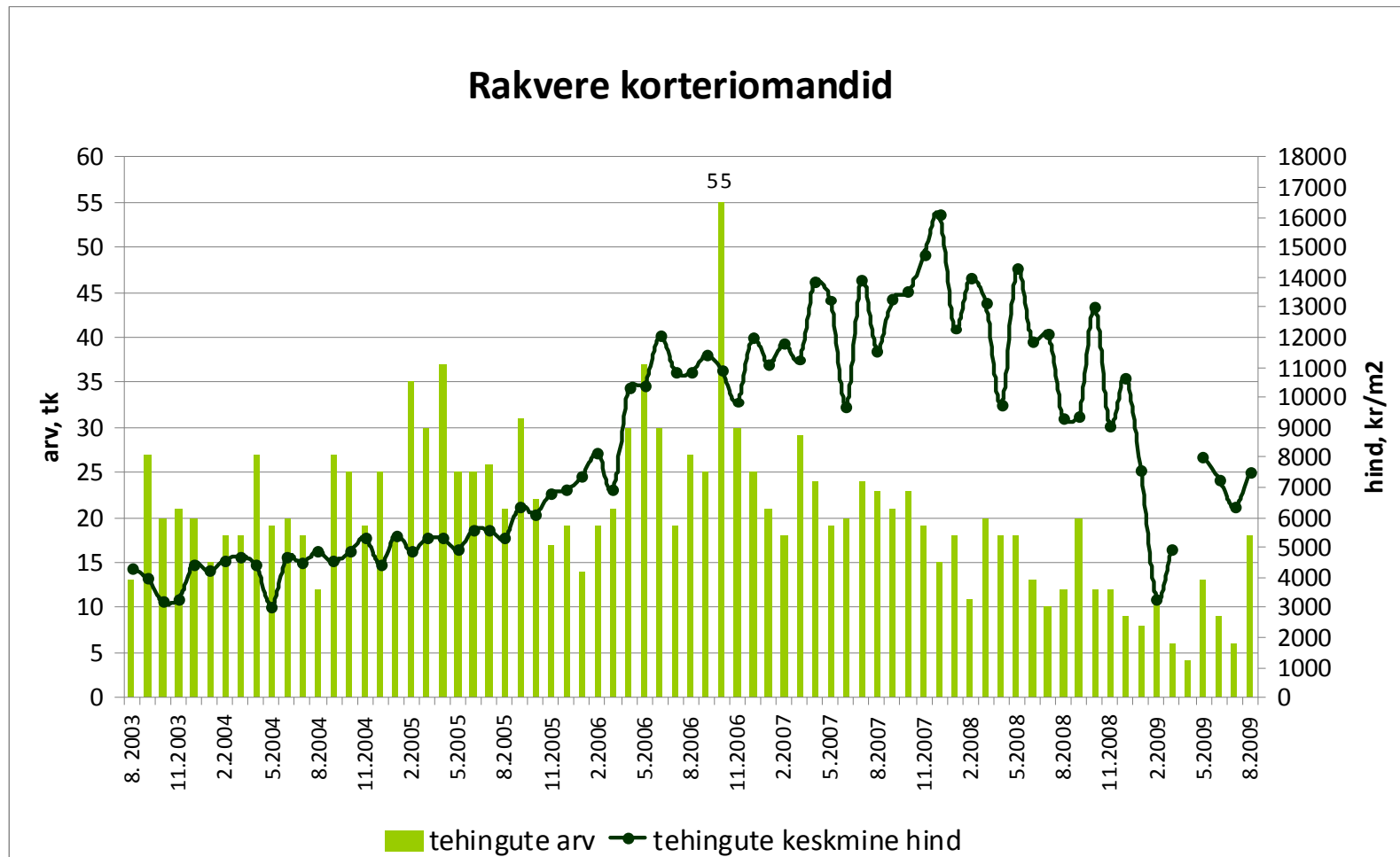
Tehingute arv on langenud 68%,
tehinguhind 77% (august -26,1%)

Kohtla-Järve korteriomandid



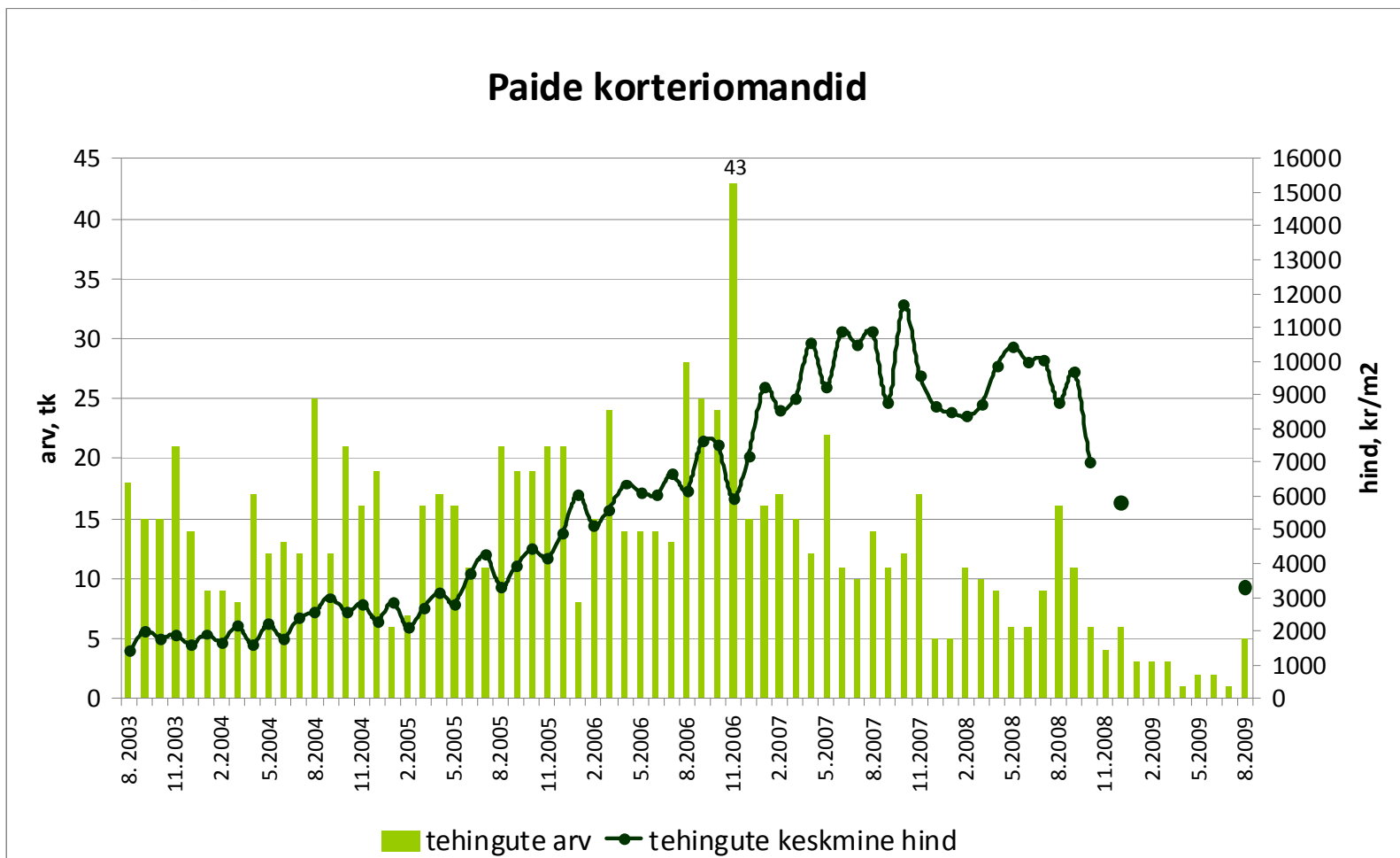
Allikas: Maa-amet

Tehingute arv on langenud 67%,
tehinguhind 53% (august +18,6%



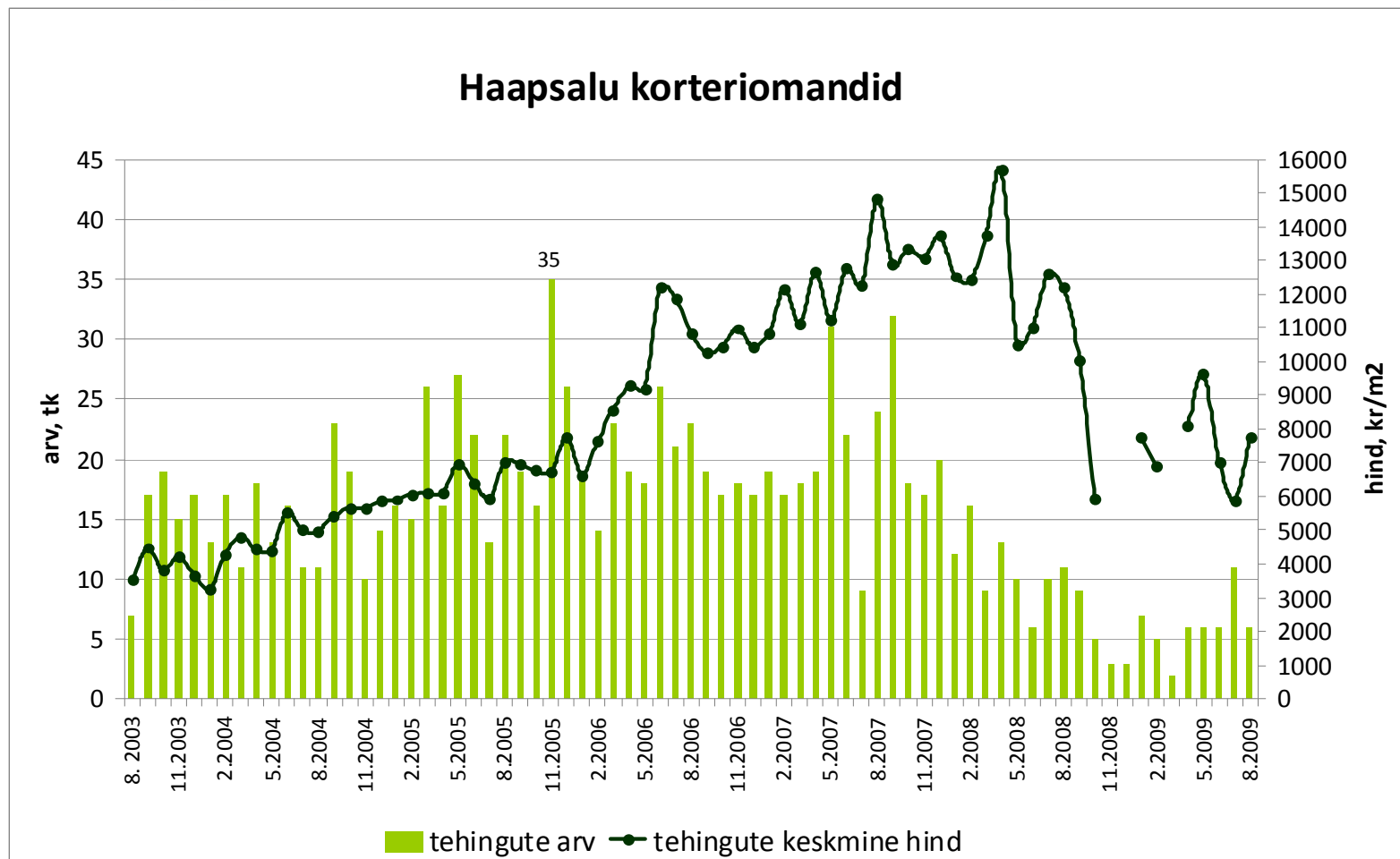
Allikas: Maa-amet

Tehingute arv on langenud 88%,
tehinguhind ca 72%



Allikas: Maa-amet

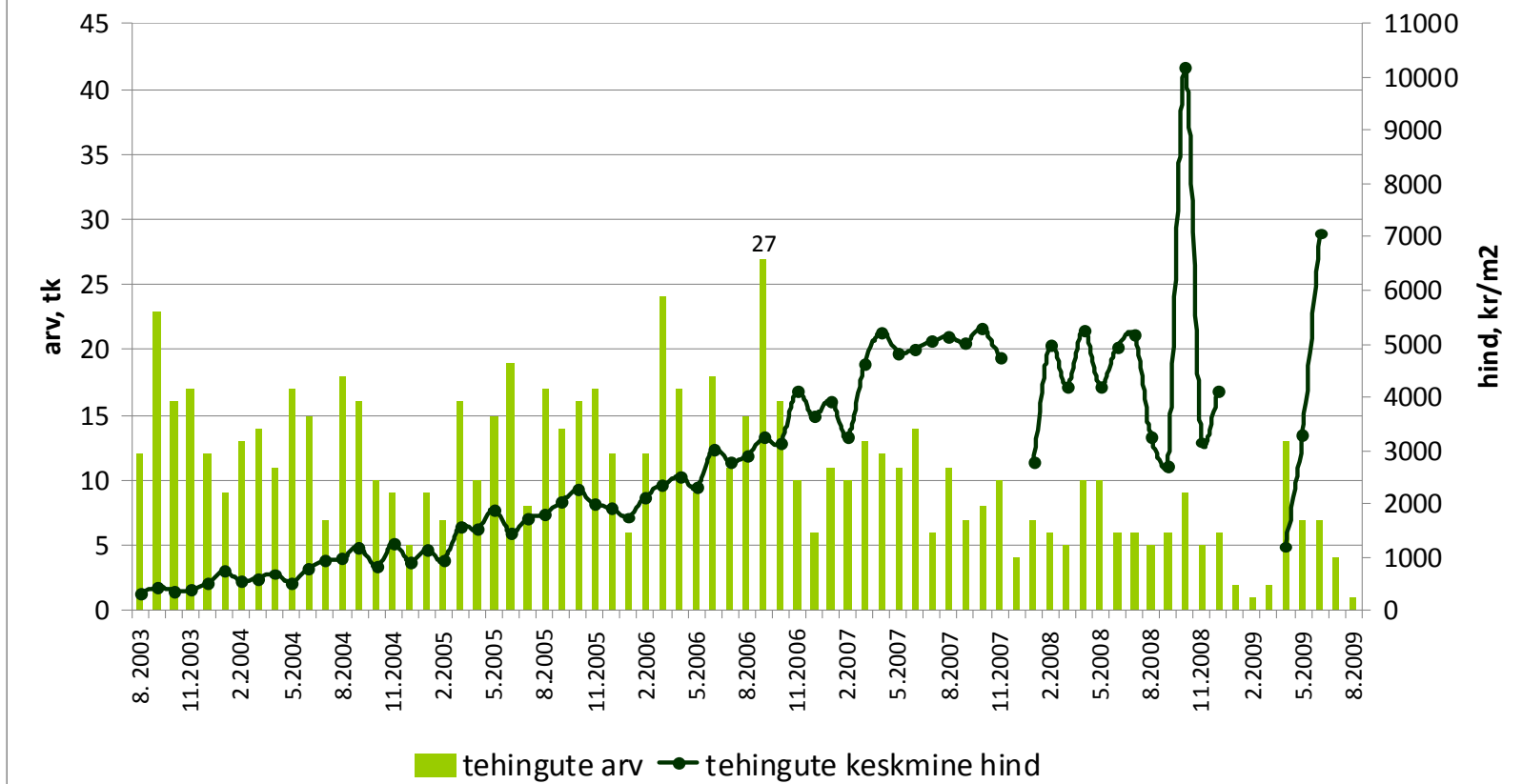
Tehingute arv on langenud 83%,
tehinguhind ca 51% (august +31,7%)



Allikas: Maa-amet

Tehingute arv on langenud 96%,
tehinguhind ca 31%*

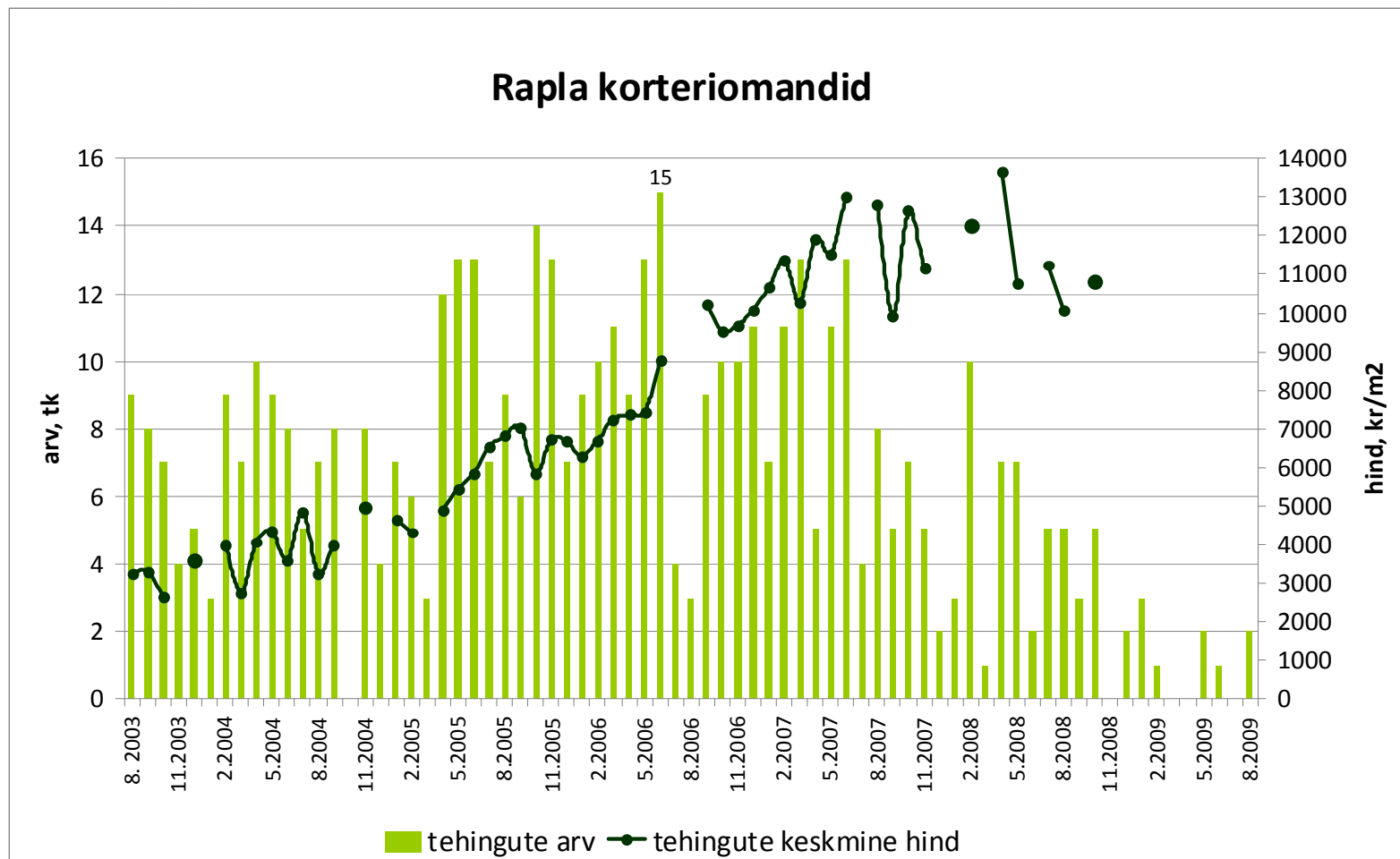
Jõgeva korteriomandid



Allikas: Maa-amet

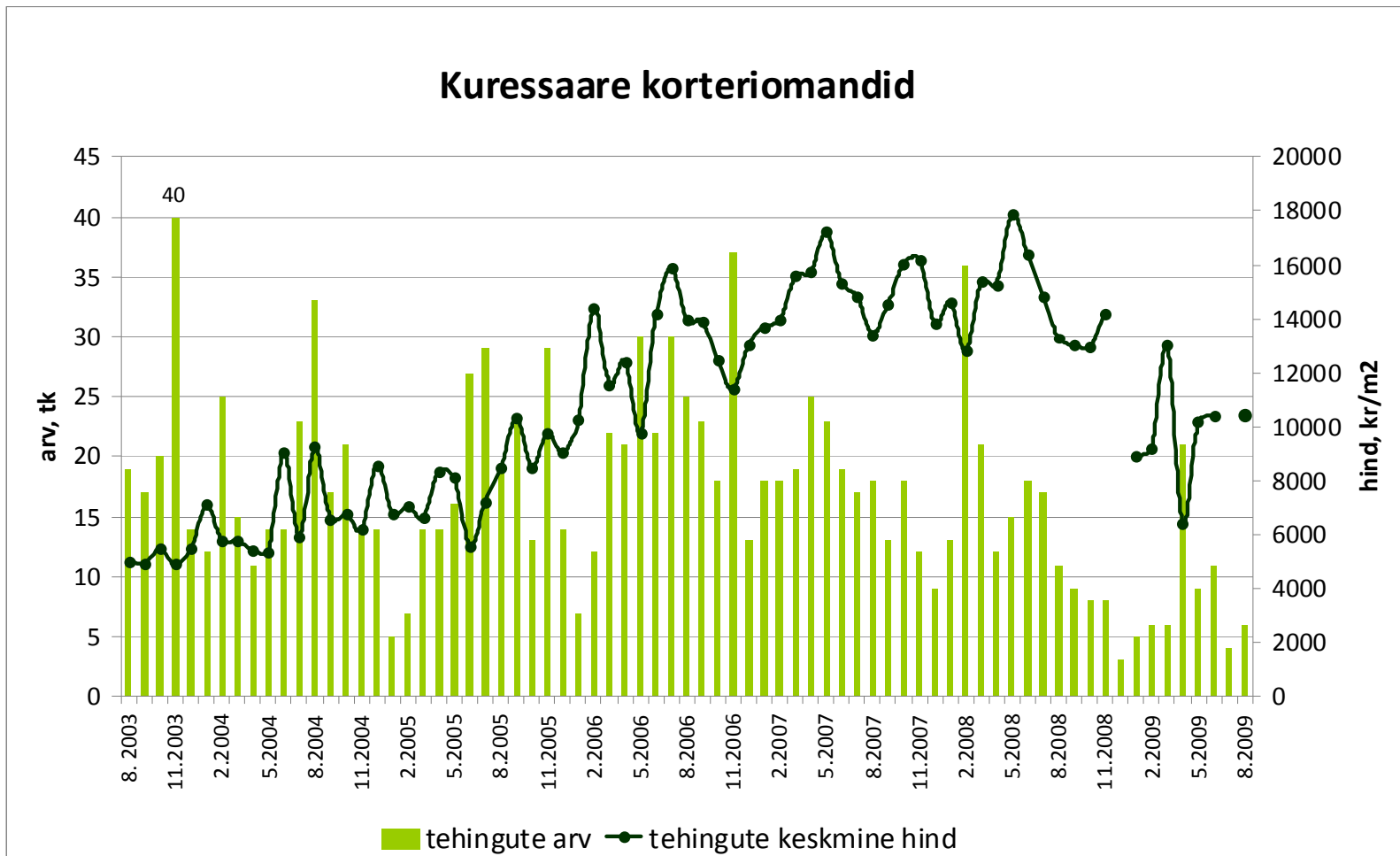
* 2008-2009 järsud hinnatõusud on tingitud vabaturuvälistest tehingutest

Tehingute arv on langenud 87%,
tehinguhind ca 21%



Allikas: Maa-amet

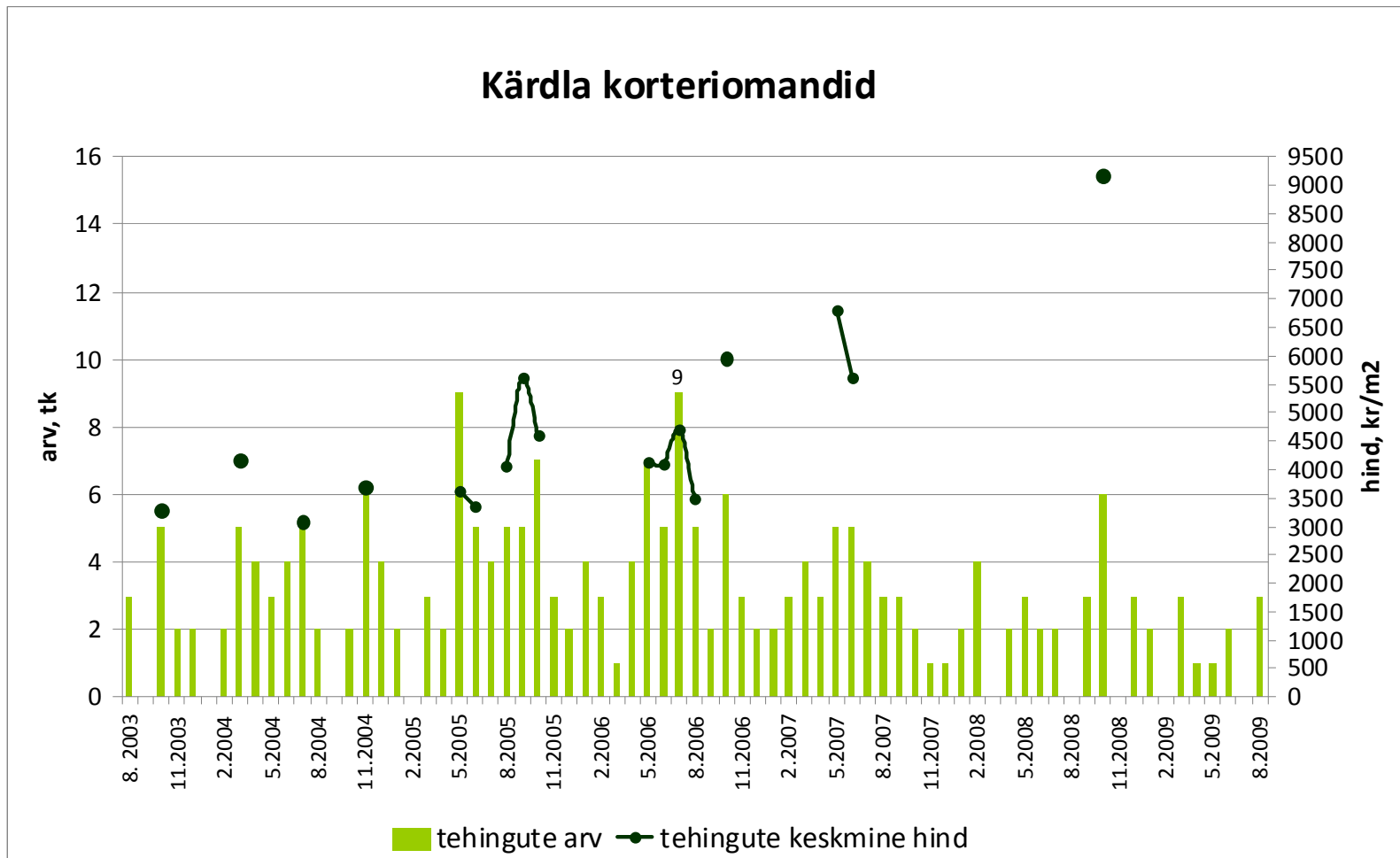
Tehingute arv on langenud 84%,
tehinguhind 42%



Allikas: Maa-amet

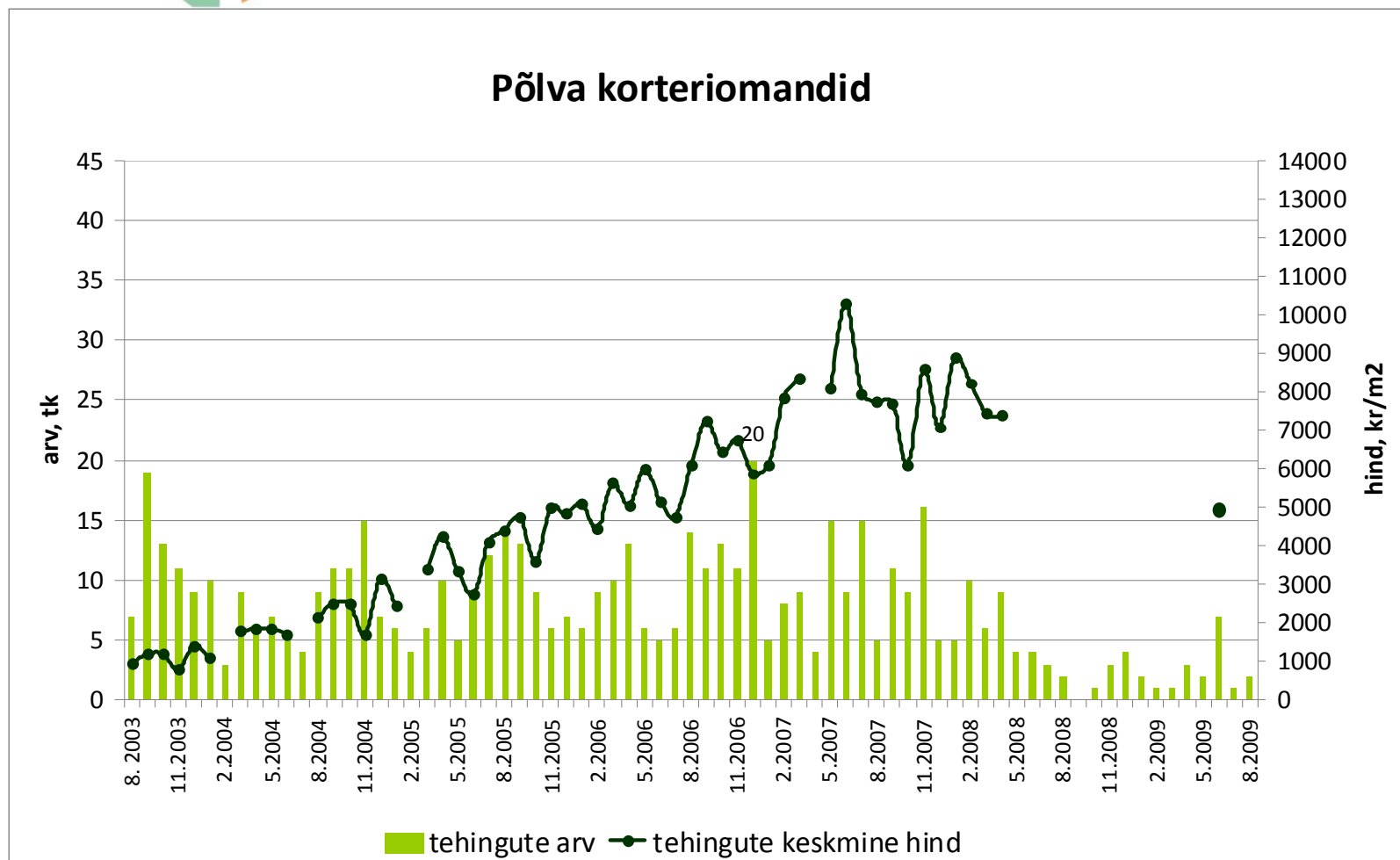


Tehingute arv on langenud 67%



Allikas: Maa-amet

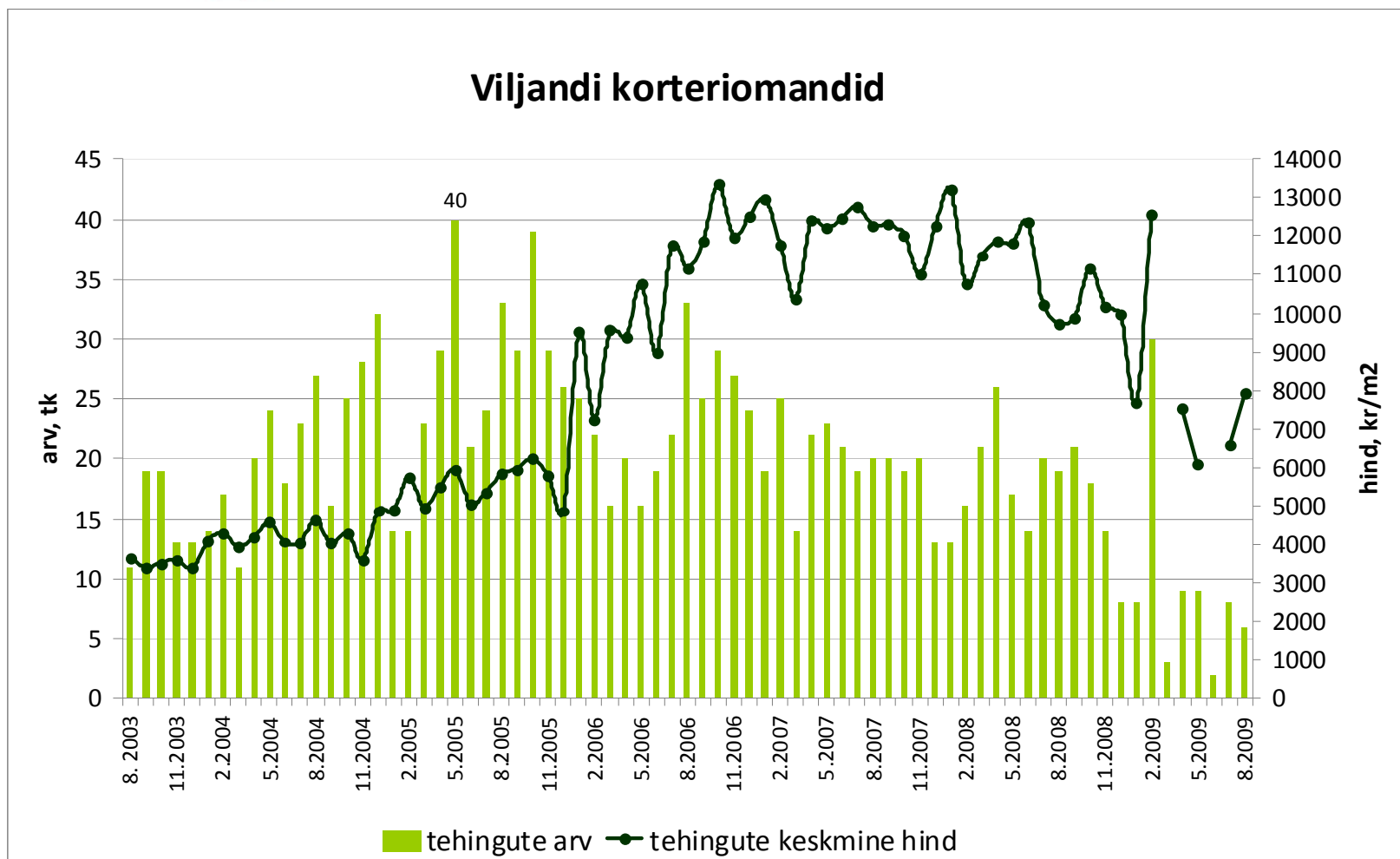
Tehingute arv on langenud 90%,
tehinguhind ca 52%



Allikas: Maa-amet

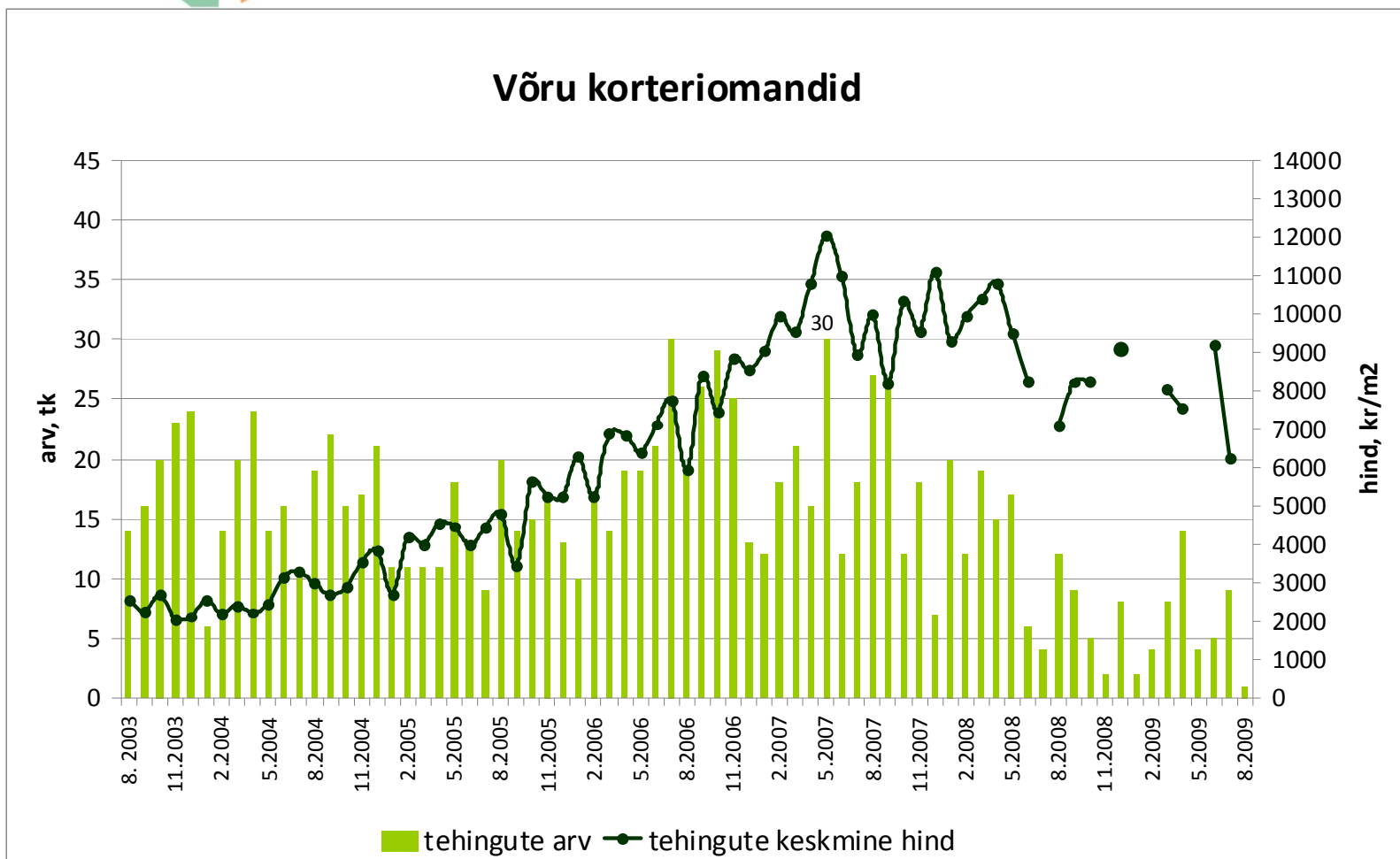


Tehingute arv on langenud 85%,
tehinguhind 40% (august +20%)



Allikas: Maa-amet

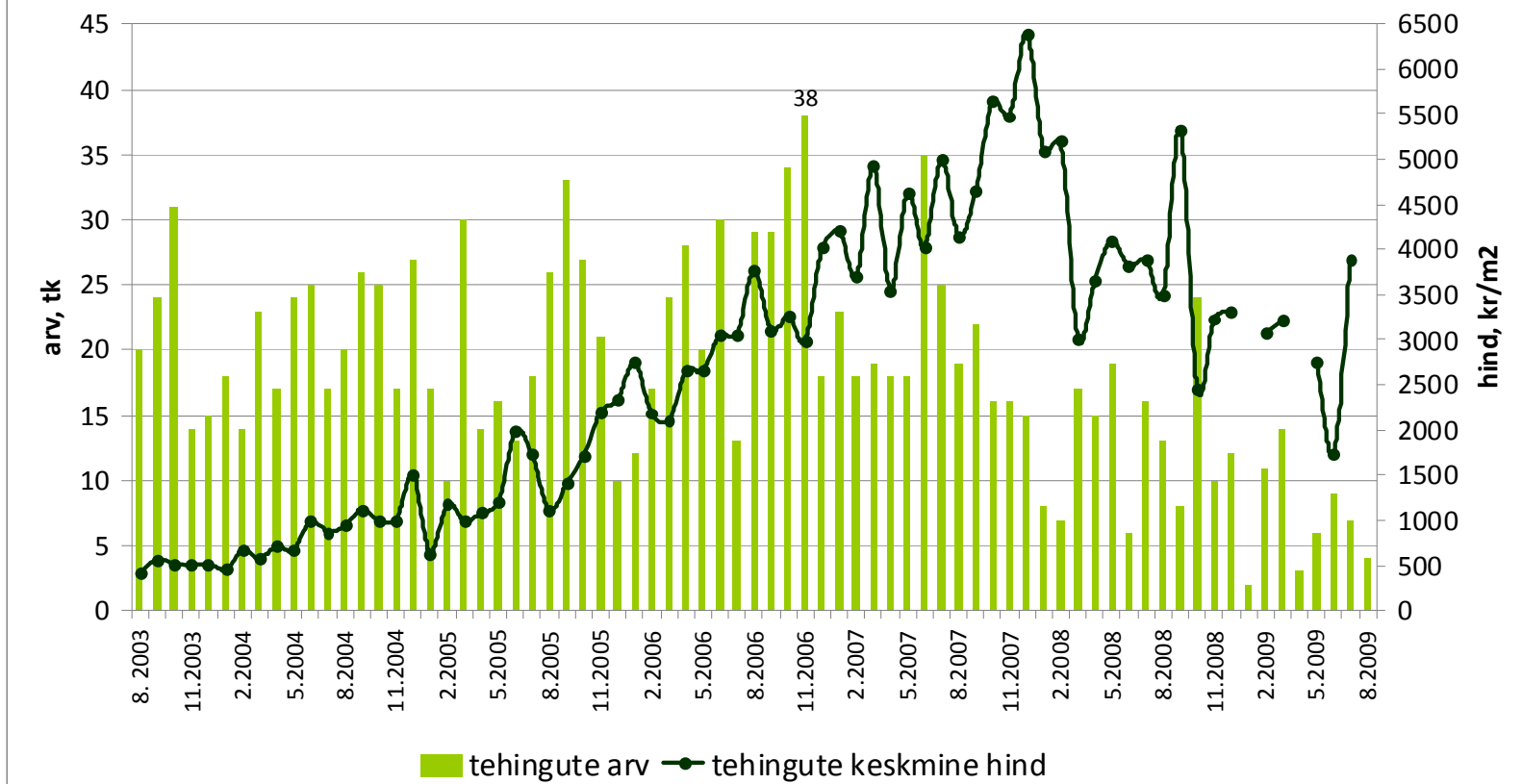
Tehingute arv on langenud 97%,
tehinguhind 48%



Allikas: Maa-amet

Tehingute arv on langenud 89%,
tehinguhind 39%

Valga korteriomandid



Allikas: Maa-amet